

# TRANSDRIVE<sup>®</sup>

## DRIVE PERFORMANCE



**Belt & Chain Tensioners**

# TRANSDRIVE®

## DRIVE PERFORMANCE

TransDrive was established to bring together our passion and experience in power transmission by being able to offer affordable, high-quality products to the power transmission and bearing market. Built on the philosophy of improving performance and quality of all of our TransDrive products.

Transdrive products have been manufactured and tested to meet ISO standards and the tough, working conditions of heavy industries.

Our team have experience in power transmission and bearings. Every product we design and manufacture is backed by years of industry knowledge and an understanding of what our customers and the market need.

At TransDrive, our goal is simple: to provide accessible, high-quality products at affordable pricing. With an unwavering commitment to excellence, TransDrive operates with a focus on providing innovative industry solutions.

Whether it is through our custom products, the standard range of pulleys, slew drives, chains and sprockets, TransDrive is dedicated to delivering effective solutions for the trades that offer increased productivity and reliability.

TransDrive exclusively supply to Resellers, Wholesalers, and Original Equipment Manufacturers (OEMs) only.

## Distributors

### Western Australia

#### Chain & Drives, Wangara

Unit 1, 45 Inspiration Drive,  
Wangara, WA 6065 Australia

**P** +61 8 9303 4966

**E** support@chainanddrives.com.au

#### Chain & Drives, Welshpool

Unit 16, 51-53 Kewdale Road,  
Welshpool, WA 6106 Australia

**P** +61 8 6314 1155

**E** support@chainanddrives.com.au

### New South Wales

#### Chain & Drives, Arndell Park

Unit 7, 70 Holbeche Road,  
Arndell Park, NSW 2148 Australia

**P** +61 2 9674 8611

**E** salesnsw@chainanddrives.com.au

#### Tank Enviro Systems

Unit 6, 68 Railway Crescent,  
Lisarow, NSW 2250

**P** +61 2 4328 1066

**E** tankadmin@tankenviro.com.au

### Queensland

#### Chain & Drives, Rocklea

Unit 3, 55 Collinsvale Street,  
Rocklea, QLD 4106 Australia

**P** +61 7 3059 9188

**E** salesqld@chainanddrives.com.au

### Become a TransDrive Dealer

#### Interested in becoming a TransDrive Dealer?

Get in touch:

**E** info@transdrive.com.au

# Contents

## Easy Ten Chain Tensioners

|                              |    |
|------------------------------|----|
| Type S with SC Sliding Block | 05 |
| Type S with Roller           | 06 |
| Type S with Sprocket         | 07 |
| Type L with AR Sliding Block | 08 |
| Type L with SC Sliding Block | 09 |

## Tensioner Arm

|   |    |
|---|----|
| SE Chain & Belt (Rosta Style) Tensioner Arm | 11 |
| Block Tensioner Arm - OVR Sliding           | 13 |
| Block Tensioner Arm - SB Bracket            | 14 |
| Block Tensioner Arm - SE Idler Sprocket     | 15 |
| Block Tensioner Arm - SE Belt Roller        | 16 |
| Block Tensioner Arm - SP (Z-A-B) Pulley     | 17 |

# Easy Ten Chain Tensioners

Easy Ten chain tensioners are precision mechanical devices used to maintain consistent tension in industrial chain drive systems. They automatically adjust chain slack, reducing wear, minimising noise, and improving overall power transmission efficiency across various mechanical applications like conveyors, manufacturing equipment, and industrial machinery.

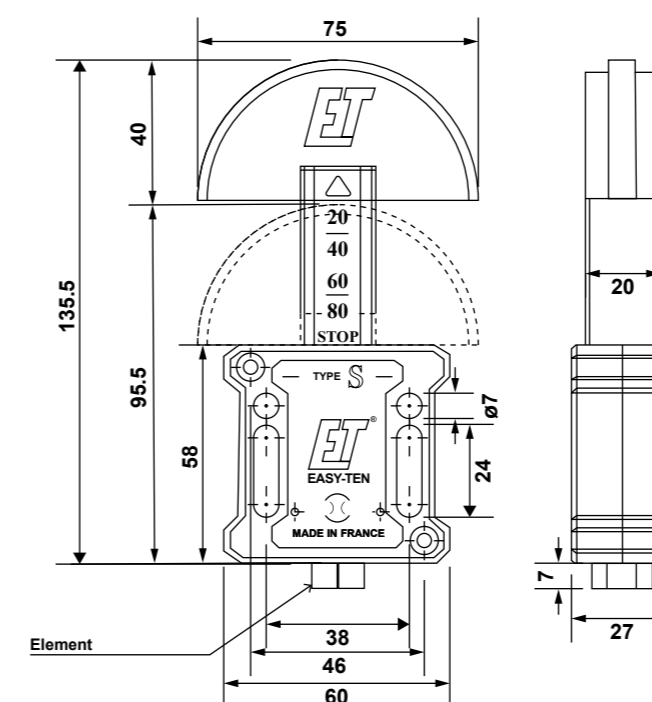


The Easy Ten Type S with sliding block chain tensioner is an industrial chain tensioning device designed for heavy-duty applications. It features a semi-circular (SC) profile sliding block made from high-density polyethylene (HD 1000, green), which provides low friction and long wear life. The main body and column are constructed from PA6 polyamide reinforced with 30% fibreglass, ensuring strength and durability. All other components, such as the spring and fixings, are made from stainless steel (INOX 304L), offering corrosion resistance.

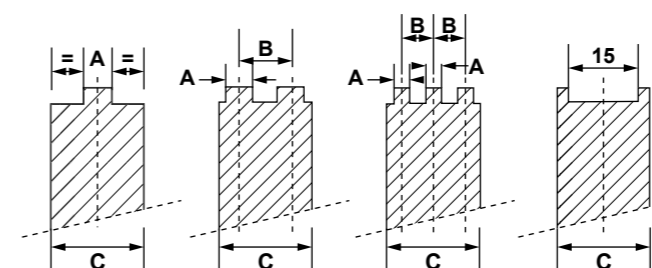
This tensioner is widely used in conveyor and power transmission systems to maintain optimal chain tension, reduce vibration, and extend chain life.

### Features

- ▶ Available in heavy (high voltage, 100–240 N) or light (low voltage, 60–140 N) spring tension versions.
- ▶ Suitable for simplex, duplex, and triplex chains, with a 40 mm tensioning stroke.
- ▶ Interchangeable with common industry tensioner sizes and compatible with a wide range of chain sizes (04B to 24B).
- ▶ The SC (semi-circular) sliding block style is ideal for chain angles up to 90°, providing smooth and reliable chain guidance.



All measurements in mm.



| Simplex Chain |       |    |   |    |
|---------------|-------|----|---|----|
| Part No.      | Chain | A  | B | C  |
| ET-S06B1H     | 06 B1 | 5  | - | 20 |
| ET-S06B1UH    | 06 B1 | 15 | - | 20 |
| ET-S08B1H     | 08 B1 | 7  | - | 20 |
| ET-S10B1H     | 10 B1 | 9  | - | 20 |
| ET-S12B1H     | 12 B1 | 11 | - | 20 |

| Duplex Chain |       |    |       |    |
|--------------|-------|----|-------|----|
| Part No.     | Chain | A  | B     | C  |
| ET-S06B2H    | 06 B2 | 5  | 10.24 | 20 |
| ET-S08B2H    | 08 B2 | 7  | 13.92 | 20 |
| ET-S10B2H    | 10 B2 | 9  | 19.59 | 20 |
| ET-S12B1H    | 12 B1 | 11 | -     | 20 |

| Triplex Chain |       |   |       |    |
|---------------|-------|---|-------|----|
| Part No.      | Chain | A | B     | C  |
| ET-S06B3H     | 06 B3 | 5 | 10.24 | 30 |
| ET-S08B3H     | 08 B3 | 7 | 13.92 | 35 |

All measurements in mm.

| Stroke (m/m) |     |     |     |     |     |
|--------------|-----|-----|-----|-----|-----|
| Size         | 40  | 30  | 20  | 10  | 0   |
| L            | 60  | 80  | 100 | 120 | 140 |
| H            | 100 | 140 | 170 | 200 | 240 |

All measurements of Force measured in Newtons.

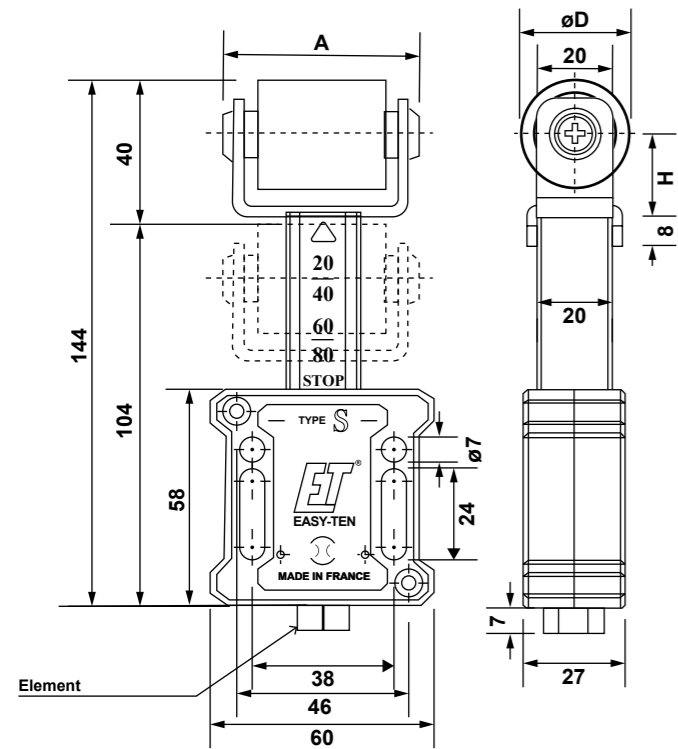
Type S with Roller

The Easy Ten Type S with Roller is a heavy-duty industrial chain tensioner designed for use with a polyamide (nylon) roller instead of a sliding block. This configuration is ideal for applications requiring low friction and high-speed operation, as the roller minimizes resistance and wear on the chain.

This tensioner is suitable for conveyor and power transmission systems where smooth, reliable chain guidance at high speeds is required

Features

- ▶ Polyamide roller with an outside diameter of 40 mm, suitable for high-speed applications up to 8,000 rpm.
- ▶ Heavy tension as standard, with an optional light tension version available.
- ▶ Main body and column constructed from reinforced polyamide for strength and durability.
- ▶ Compatible with various chain sizes and configurations (simplex, duplex, triplex).
- ▶ Provides consistent chain tension, reduces vibration, and extends chain and sprocket life.



All measurements are in mm.

Polyamide



Steel



| Size | Stroke (m/m) |     |     |     |     |
|------|--------------|-----|-----|-----|-----|
|      | 40           | 30  | 20  | 10  | 0   |
| L    | 60           | 80  | 100 | 120 | 140 |
| H    | 100          | 140 | 170 | 200 | 240 |

All measurements of Force measured in Newtons

| Polyamide                              | Steel<br>(Zinc Plated Steel Roller)                | Stainless Steel<br>(Roller & Bearing)   | Polyamide-<br>Stainless Steel                       | Max SPEED<br>T/mm | A  | B  | C  | OD | H    |
|--|--|---|---|-------------------|----|----|----|----|------|
| Galvanized Steel<br>+ Polyamide Roller | Galvanized Steel Yoke<br>+ Galvanized Steel Roller | Stainless steel clevis<br>+ Stainless steel roller<br>+ Stainless steel bearing | Chape Inox<br>+ Galet Polyamide<br>+ Roulement Inox |                   |    |    |    |    |      |
| ETRE-2H                                | ETRU-2H  | ETXRU-2H  | ETXRE-2H  | 8000              | 54 | 35 | 45 | 30 | 22.5 |
| ETRE-3/4H                              | ETRU-3/4H  | ETXRU-3/4H  | ETXRE-3/4H  | 8000              | 70 | 45 | 58 | 40 | 27.5 |

All measurements in mm.

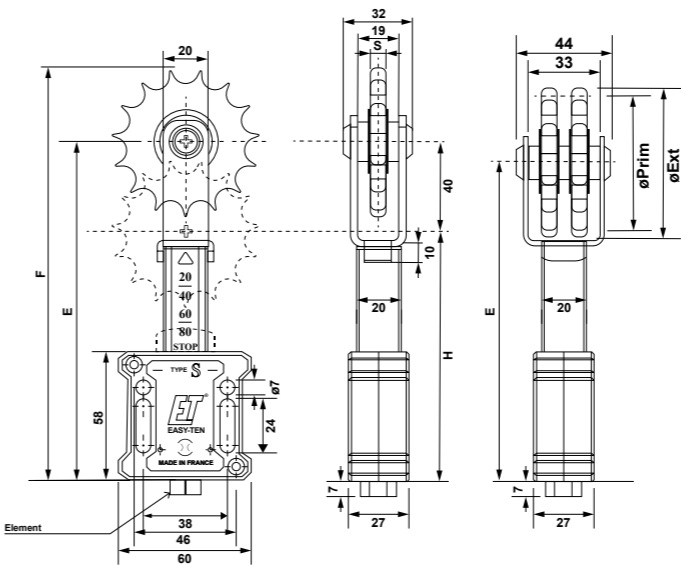
Type S with Sprocket

The Easy Ten Type S with Sprocket is a robust industrial chain tensioner designed for heavy-duty applications where chain guidance via a steel sprocket is preferred over sliding blocks or rollers. This tensioner uses a zinc-plated steel sprocket mounted on an enlarged bearing, ensuring smooth rotation and durability. The sprocket is available in various sizes to suit different British Standard simplex and duplex chains (e.g., 06B1, 06B2, 08B1, 08B2), with dimensions tailored to match chain pitch and width.

This configuration is ideal for applications where minimal chain wear and precise alignment are critical, such as conveyors and power transmission systems

Features

- ▶ Heavy tension as standard, with an optional light tension version available.
- ▶ Sprocket ensures precise and low-friction chain guidance, ideal for higher tension and speeds up to 60 m/min.
- ▶ Main body and arm constructed from high-strength materials for industrial reliability.
- ▶ Fully compatible with a wide range of chain sizes and configurations.
- ▶ Easy installation and interchangeable with other common tensioner types.



All measurements are in mm.

Simplex

Duplex



Steel



Stainless Steel

| Size | Stroke (m/m) |     |     |     |     |
|------|--------------|-----|-----|-----|-----|
|      | 40           | 30  | 20  | 10  | 0   |
| L    | 60           | 80  | 100 | 120 | 140 |
| H    | 100          | 140 | 170 | 200 | 240 |

All measurements of Force measured in Newtons.

| Steel      | Stainless Steel | Z  | Chain |       | S   | OD   | PCD   | F   | E     | H     |
|------------|-----------------|----|-------|-------|-----|------|-------|-----|-------|-------|
|            |                 |    | mm    | BS    |     |      |       |     |       |       |
| ETRX-06B1H | ETRXI-06B1H     | 15 | 9.525 | 06 B1 | 5.3 | 49.3 | 45.81 | 160 | 135   | 95    |
| ETRX-06B2H | ETRXI-06B2H     | 15 | 9.525 | 06 B2 | 5.3 | 49.3 | 45.81 | 168 | 143.5 | 103.5 |
| ETRX-08B1H | ETRXI-08B1H     | 15 | 12.7  | 08 B1 | 7.2 | 65.5 | 61.09 | 186 | 153.5 | 113.5 |
| ETRX-08B2H | ETRXI-08B2H     | 15 | 12.7  | 08 B2 | 7.2 | 65.5 | 61.09 | 176 | 143.5 | 103.5 |
| ETRX-10B1H | ETRXI-10B1H     | 15 | 15.8  | 10 B1 | 9.1 | 83   | 76.36 | 195 | 153.5 | 113.5 |

All measurements in mm.

Type L with AR Sliding Block

The Easy Ten Type L with AR sliding block is a heavy-duty chain tensioner designed for industrial chain drive systems. It features an "AR" (arc profile) sliding block, providing smooth, low-friction chain guidance and effective tensioning across simplex, duplex, and triplex chains. The AR sliding block is ideal for applications requiring robust tensioning over longer contact distances.

This tensioner is commonly used in conveyor and power transmission applications where reliable, long-life chain tensioning is essential

Features

- ▶ Arc profile (AR) sliding block for extended chain contact and reduced wear.
- ▶ Suitable for simplex, duplex, and triplex chains in a wide range of sizes
- ▶ Heavy tension as standard, with optional light tension available.
- ▶ Main body and column constructed from reinforced polyamide for strength and durability.
- ▶ Provides consistent tension, reduces vibration, and extends chain and sprocket life.

| Simplex Chain |       |    |   |    |
|---------------|-------|----|---|----|
| Part No.      | Chain | A  | B | C  |
| ETL-AR06B1H   | 06 B1 | 5  | - | 30 |
| ETL-AR08B1H   | 08 B1 | 7  | - | 30 |
| ETL-AR10B1H   | 10 B1 | 9  | - | 30 |
| ETL-AR12B1H   | 12 B1 | 11 | - | 30 |
| ETL-AR16B1H   | 16 B1 | 16 | - | 30 |
| ETL-AR20B1H   | 20 B1 | 18 | - | 30 |

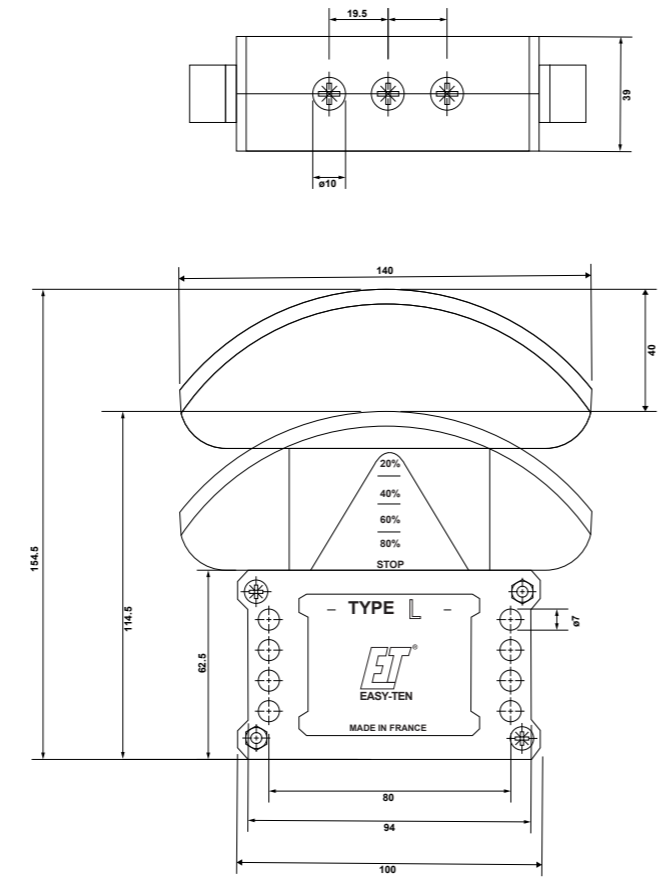
| Duplex Chain |       |    |       |    |
|--------------|-------|----|-------|----|
| Part No.     | Chain | A  | B     | C  |
| ETL-AR06B2H  | 06 B2 | 5  | 10.24 | 30 |
| ETL-AR08B2H  | 08 B2 | 7  | 13.92 | 30 |
| ETL-AR10B2H  | 10 B2 | 9  | 16.59 | 30 |
| ETL-AR12B2H  | 12 B2 | 11 | 19.46 | 35 |
| ETL-AR16B2H  | 16 B2 | 16 | 31.88 | 50 |

| Triplex Chain |       |   |       |    |
|---------------|-------|---|-------|----|
| Part No.      | Chain | A | B     | C  |
| ETL-AR06B3H   | 06 B3 | 5 | 10.24 | 30 |
| ETL-AR08B3H   | 08 B3 | 7 | 13.92 | 35 |

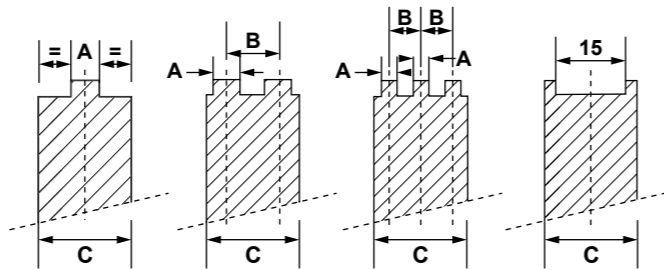
All measurements are in mm.

| Type                       | Stroke (m/m) |     |     |     |     |
|----------------------------|--------------|-----|-----|-----|-----|
|                            | 40           | 30  | 20  | 10  | 0   |
| 1 Spring (L) Light Tension | 60           | 80  | 100 | 120 | 140 |
| 1 Spring (H) Heavy Tension | 100          | 140 | 170 | 200 | 240 |
| 2 Spring (L) Light Tension | 120          | 160 | 200 | 240 | 280 |
| 2 Spring (H) Heavy Tension | 200          | 270 | 340 | 400 | 480 |
| 3 Spring (L) Light Tension | 180          | 240 | 300 | 360 | 420 |
| 3 Spring (H) Heavy Tension | 300          | 420 | 500 | 600 | 720 |

All measurements of Force measured in Newtons.



All measurements are in mm



Type L with SC Sliding Block

The Easy Ten Type L with SC (semi-circular) sliding block is a robust industrial chain tensioner designed for heavy-duty chain drive systems. It features a semi-circular profile sliding block, machined from green polyethylene HD 1000, which provides low friction and long wear life for effective chain guidance and tensioning.

This tensioner is commonly used in conveyor and power transmission applications requiring consistent, durable, and low-maintenance chain tensioning. It is interchangeable with industry-standard tensioners and suitable for various chain sizes and configurations

Features

- ▶ Semi-circular (SC) sliding block profile, ideal for maintaining chain alignment and tension over angles up to 90°.
- ▶ Main case constructed from PA6 polyamide reinforced with 30% glass fibre for high strength, with the column in black polyethylene HD 500.
- ▶ Compatible with a wide range of British Standard simplex, duplex, and triplex chains.
- ▶ Heavy tension as standard, with an optional light tension version available.
- ▶ Provides a 40 mm tensioning stroke for reliable chain engagement.
- ▶ Reduces vibration, minimizes chain wear, and extends the service life of both chain and sprockets.

| Simplex Chain |       |    |   |    |
|---------------|-------|----|---|----|
| Part No.      | Chain | A  | B | C  |
| ETL-SC06B1H   | 06 B1 | 5  | - | 30 |
| ETL-SC08B1H   | 08 B1 | 7  | - | 30 |
| ETL-SC10B1H   | 10 B1 | 9  | - | 30 |
| ETL-SC12B1H   | 12 B1 | 11 | - | 30 |
| ETL-SC16B1H   | 16 B1 | 16 | - | 30 |
| ETL-SC20B1H   | 20 B1 | 18 | - | 30 |

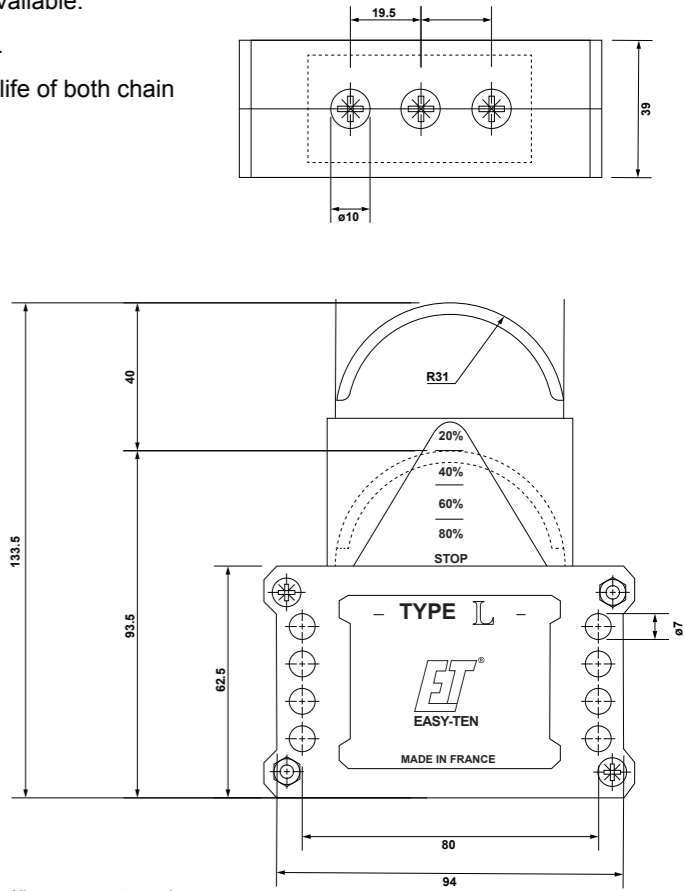
| Duplex Chain |       |    |       |    |
|--------------|-------|----|-------|----|
| Part No.     | Chain | A  | B     | C  |
| ETL-SC06B2H  | 06 B2 | 5  | 10.24 | 30 |
| ETL-SC08B2H  | 08 B2 | 7  | 13.92 | 30 |
| ETL-SC10B2H  | 10 B2 | 9  | 16.59 | 30 |
| ETL-SC12B2H  | 12 B2 | 11 | 19.46 | 35 |

| Triplex Chain |       |   |       |    |
|---------------|-------|---|-------|----|
| Part No.      | Chain | A | B     | C  |
| ETL-SC06B3H   | 06 B3 | 5 | 10.24 | 30 |
| ETL-SC08B3H   | 08 B3 | 7 | 13.92 | 35 |

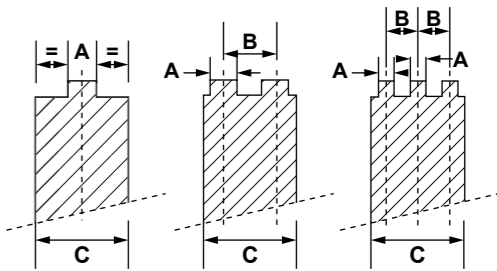
All measurements are in mm.

| Type                       | Stroke (m/m) |     |     |     |     |
|----------------------------|--------------|-----|-----|-----|-----|
|                            | 40           | 30  | 20  | 10  | 0   |
| 1 Spring (L) Light Tension | 60           | 80  | 100 | 120 | 140 |
| 1 Spring (H) Heavy Tension | 100          | 140 | 170 | 200 | 240 |
| 2 Spring (L) Light Tension | 120          | 160 | 200 | 240 | 280 |
| 2 Spring (H) Heavy Tension | 200          | 270 | 340 | 400 | 480 |
| 3 Spring (L) Light Tension | 180          | 240 | 300 | 360 | 420 |
| 3 Spring (H) Heavy Tension | 300          | 420 | 500 | 600 | 720 |

All measurements of Force measured in Newtons.

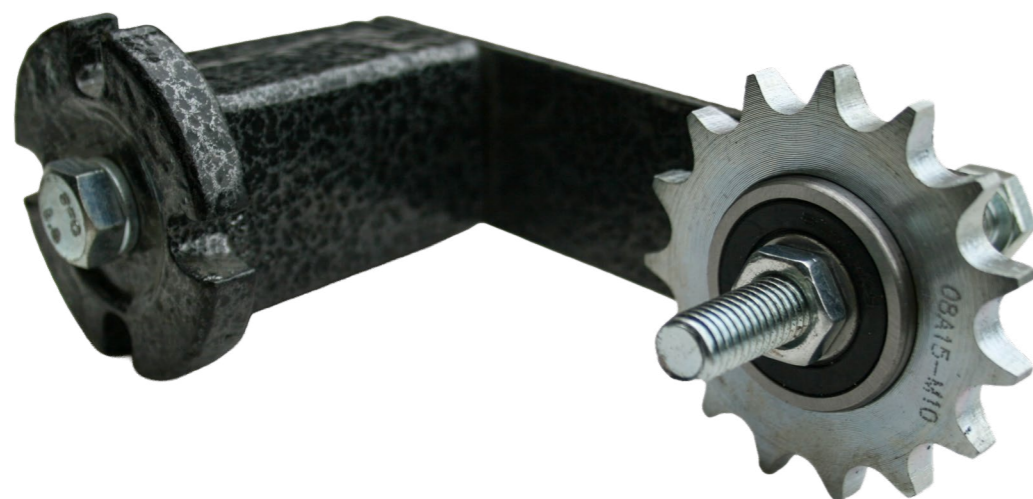


All measurements are in mm



# Tensioner Arm

The Elastomeric Tensioners utilise a reliable and well-established design to maintain consistent and uniform tension in both chain and belt drives, effectively compensating for chain and belt stretch.



## Tensioner Arm

### SE Chain & Belt (Rosta Style) Tensioner Arm

**TRANSDRIVE**  
DRIVE PERFORMANCE

Proven to be an effective way for tensioning chain and belt drives in most applications, the TransDrive Rubber Block Series Tensioner has been designed to ensure optimal performance and longevity with reduced maintenance issues. From conveyor systems to automotive engines, the Rubber Block Series Tensioners deliver consistent force, minimizing belt slippage and maximising efficiency.

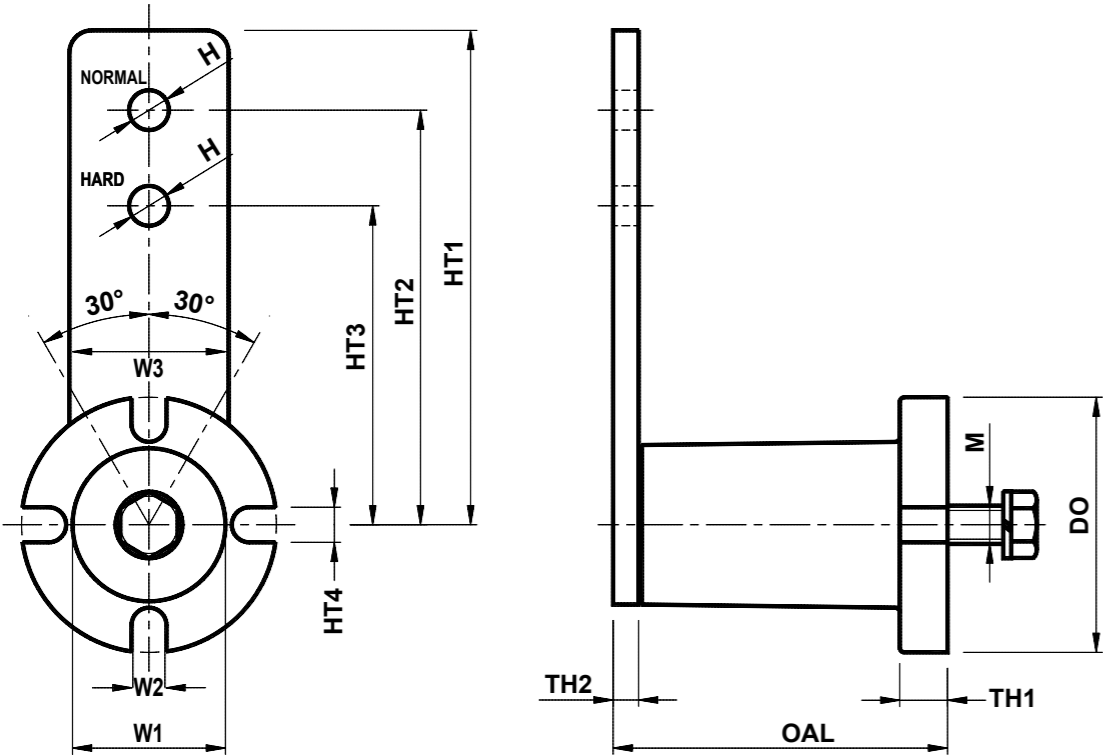
## Features

- ▶ A one nut mounting system, which allows for 360° rotation.
- ▶ Can be pre-tensioned by up to 30°, this means that as the chain or belt stretches, the tensioner automatically takes up the slack as the elastomeric elements automatically adjust the drives tension.
- ▶ Chain and Belt life is increased by as much as 30%.
- ▶ Elastomeric parts absorb vibrations and shock loading.
- ▶ Maintenance Free – no metal on metal parts, lubrication free.
- ▶ Impervious to dust and dirt
- ▶ Operating temperature -40°C to +80°C.
- ▶ Two holes are provided on the arm, allowing two different levels of force to be generated: “normal” and “hard”. The “hard” setting deploys approximately 25% more force.

## Materials

- ▶ Stainless Steel
- ▶ Galvanized
- ▶ Nickel Plated
- ▶ Plastic





| Type | OD  | OAL | TH1 | HT2 | HT3 | W3 | HT1 | W1 | W2 | TH2 | HT4 | H  | M   | F in n/M<br>0 - 30° | Weight (kg) |
|------|-----|-----|-----|-----|-----|----|-----|----|----|-----|-----|----|-----|---------------------|-------------|
| SE11 | 35  | 50  | 5   | 80  | 60  | 20 | 90  | 20 | 7  | 7   | 6   | 8  | M6  | 0-90                | 0.25        |
| SE15 | 50  | 60  | 5   | 100 | 80  | 30 | 110 | 22 | 8  | 8   | 8   | 10 | M8  | 0-140               | 0.45        |
| SE18 | 60  | 75  | 6   | 100 | 80  | 40 | 115 | 35 | 9  | 10  | 11  | 10 | M10 | 0-320               | 0.75        |
| SE27 | 80  | 110 | 8   | 135 | 105 | 50 | 155 | 45 | 10 | 15  | 13  | 12 | M12 | 0-820               | 1.8         |
| SE38 | 105 | 140 | 10  | 180 | 140 | 65 | 200 | 62 | 13 | 16  | 15  | 20 | M16 | 0-1500              | 3.7         |
| SE45 | 115 | 200 | 12  | 225 | 190 | 70 | 260 | 78 | 17 | 18  | 20  | 20 | M20 | 0-2500              | 6.5         |

All measurements in mm.

| Type | Angle of Pretension<br>(Force required in psi) |       |        |       |        |       | Mounting<br>Bolt Torque |
|------|--|-------|--------|-------|--------|-------|-------------------------|
|      | 10°  |       | 20°    |       | 30°    |       |                         |
|      | Normal   | Hard  | Normal | Hard  | Normal | Hard  |                         |
| SE11 | 3.4  | 4.5   | 9.0    | 11.9  | 18.0   | 23.9  | 89                      |
| SE15 | 5.6  | 7.0   | 14.6   | 18.2  | 30.4   | 37.8  | 221                     |
| SE18 | 16.9   | 20.9  | 40.5   | 50.6  | 78.7   | 98.2  | 434                     |
| SE27 | 33.8   | 43.8  | 85.4   | 111.1 | 179.8  | 233.8 | 761                     |
| SE38 | 65.3   | 81.4  | 164.1  | 205.0 | 337.2  | 4215  | 1859                    |
| SE45 | 112.5  | 140.5 | 292.5  | 365.6 | 584.5  | 730.7 | 3629                    |

The optimum angle of pretension is 20°, the maximum angle is 30°. At 20° the tensioner has maximum capability to absorb vibrations and shock loads, and still have enough arc motion to automatically take up belt or chain stretch.

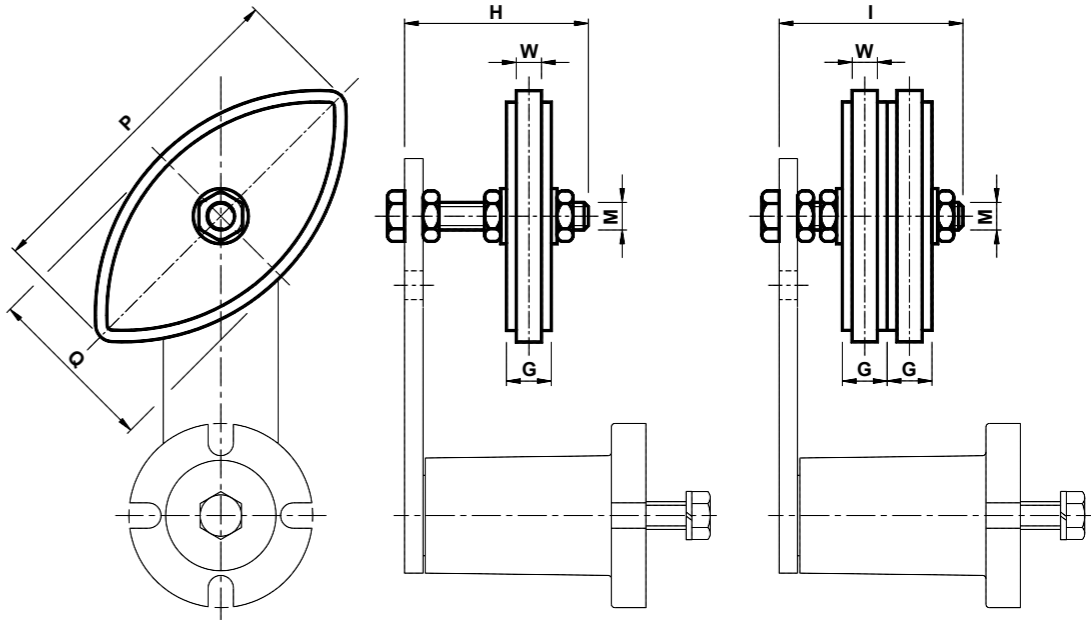
| Tensioner Selection |      |           |
|---------------------|------|-----------|
| Chain               | Belt | Tensioner |
| 25-1                | A    | SE11      |
| 35-1-2-3            | A, B | SE15      |
| 35-1-2-3            | B, C | SE18      |
| 40-3                |      |           |
| 50-1-2-3            | D, E | SE27      |
| 60-1-2-3            |      |           |
| 80-1-2-3            | -    | SE38      |
| 80-3                |      |           |
| 100-1-2-3           |      |           |
| 120-1-2-3           |      |           |
| 140-1-2             | -    | SE45      |
| 160-1-2             |      |           |
| 180-1-2             |      |           |
| 200-1-2             |      |           |

The OVR Sliding Block Tensioner Kit is engineered for efficient chain tensioning in industrial applications. Made from high molecular density polyethylene, its unique oval design enables double-sided use for extended lifespan and versatility. Suitable for operating speeds up to 20 m/min and temperatures up to 70°C, the OVR kit is available in simplex and duplex versions to fit a variety of chain sizes.



Features

- ▶ High molecular density polyethylene construction for durability
- ▶ Dual-sided oval design for extended wear life
- ▶ Compatible with simplex (“S”) and duplex (“D”) chain systems
- ▶ Low friction, high wear resistance
- ▶ Operating speed ≤ 20 m/min
- ▶ Operating temperature ≤ 70°C
- ▶ Multiple sizes available for different chain types



| Type     | Simplex  | Duplex   | Chain        | Size | A    | B    | C  | E  | G    | H  | I  | L   | M   | P   | Q  | R  | W  | Weight kg |      |      |
|----------|----------|----------|--------------|------|------|------|----|----|------|----|----|-----|-----|-----|----|----|----|-----------|------|------|
|          |          |          |              |      |      |      |    |    |      |    |    |     |     |     |    |    |    | S         | D    | T    |
| OVR 10-1 | RE011030 | RE011040 | 3/8" x 7/32" | 10   | 10   | 18   |    | 10 | 10.2 | 45 | 45 |     | M8  | 75  | 40 | 35 | 5  | 0.09      | 0.10 |      |
| OVR 20-2 | RE011032 | RE011042 | 1/2" x 5/16" | 20   | 14   | 20.5 |    | 10 | 13.9 | 55 | 55 |     | M10 | 96  | 50 | 35 | 7  | 0.10      | 0.11 |      |
| OVR 30-2 | RE011032 | RE011044 | 1/2" x 5/16" | 30   | 14   | 20.5 | 34 | 10 | 13.9 | 55 | 60 | 70  | M10 | 96  | 50 | 35 | 7  | 0.11      | 0.12 | 0.13 |
| OVR 30-3 | RE011034 | RE011046 | 5/8" x 3/8"  | 30   | 16.5 | 25   |    | 12 | 16.6 | 55 | 70 |     | M10 | 126 | 65 | 45 | 9  | 0.12      | 0.14 |      |
| OVR 30-4 | RE011036 | RE011048 | 1/2" x 5/16" | 30   | 17.5 | 30   |    | 12 | 19.5 | 60 | 70 |     | M10 | 148 | 74 | 45 | 11 | 0.13      | 0.15 |      |
| OVR 40-4 | RE011038 | RE011050 | 1/2" x 5/16" | 40   | 17.5 | 30   | 49 | 12 | 19.5 | 80 | 80 | 100 | M12 | 148 | 74 | 45 | 11 | 0.20      | 0.22 | 0.28 |

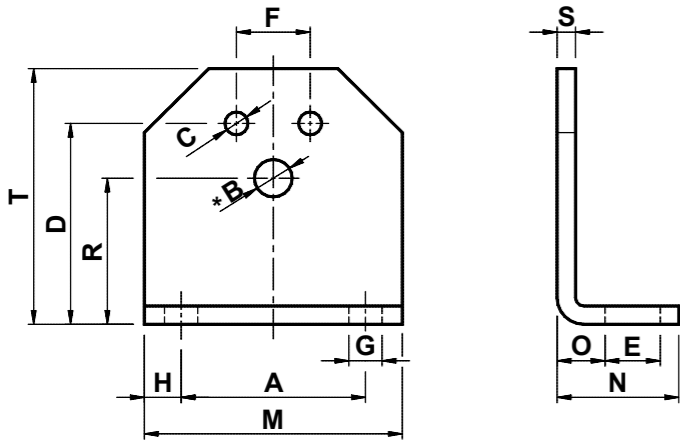
All measurements in mm unless otherwise stated.

Block Tensioner Arm - SB Bracket

The SB Bracket is a robust steel support designed to simplify the mounting of elastic elements, such as chain tensioners, onto machinery. It features dedicated mounting bores for secure fixation and is available in multiple sizes to suit various applications.

Features

- Facilitates quick and secure assembly of elastic elements on machines
- Made from durable steel for industrial reliability
- Multiple size options for compatibility with different setups
- Dedicated bore for easy fixation of CRESA tensioners (types RE, FE)
- Lightweight and compact design for versatile installation



| Type | Code No. | A   | Size | B    | C    | D   | E    | F  | G    | H    | M   | N  | O    | R  | S  | T   | Weight<br>kg |
|------|----------|-----|------|------|------|-----|------|----|------|------|-----|----|------|----|----|-----|--------------|
| SB10 | RE020510 | 30  | 10   | 6.5  | 5.5  | 35  | 13   | 10 | 7    | 7.5  | 45  | 30 | 11.5 | 27 | 4  | 46  | 0.09         |
| SB20 | RE020511 | 40  | 20   | 8.5  | 6.5  | 44  | 13   | 12 | 7    | 7.5  | 55  | 32 | 13.5 | 34 | 5  | 58  | 0.17         |
| SB30 | RE020512 | 50  | 30   | 10.5 | 8.5  | 55  | 15.5 | 20 | 9.5  | 10   | 70  | 38 | 16.5 | 43 | 6  | 74  | 0.29         |
| SB40 | RE020513 | 65  | 40   | 12.5 | 10.5 | 75  | 21.5 | 25 | 11.5 | 12.5 | 90  | 52 | 21   | 57 | 8  | 98  | 0.72         |
| SB50 | RE020514 | 80  | 50   | 16.5 | 12.5 | 85  | 24   | 35 | 14   | 15   | 110 | 55 | 21   | 66 | 8  | 116 | 0.93         |
| SB60 | RE020515 | 100 | 60   | 20.5 | 12.5 | 110 | 30   | 40 | 18   | 20   | 140 | 66 | 26   | 80 | 10 | 140 | 1.82         |

All measurements in mm unless otherwise stated.

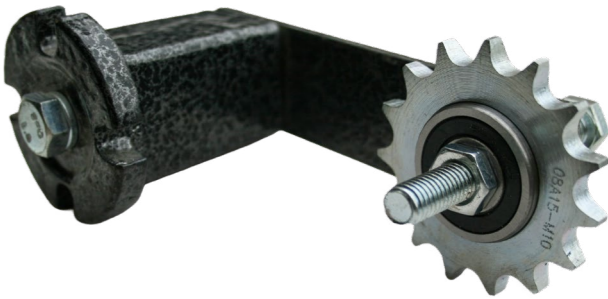
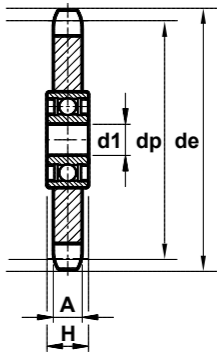
Block Tensioner Arm - SE Idler Sprocket

The SE idler sprocket for tensioner arms is a durable, maintenance-free sprocket designed for SE series chain tensioners. It ensures smooth chain operation and reliable tensioning across various chain sizes.

Ideal for conveyors and industrial machinery requiring consistent, trouble-free chain tension.

Features

- Automatically compensates for chain slack
- Reduces wear and extends chain life
- Minimises vibration and noise
- Easy installation and adjustment
- Maintenance-free, durable construction
- Enhances power transmission efficiency



| Part No          | Pitch  | Teeth | de    | dp    | A    | d1 | Bolt   | H    |
|------------------|--------|-------|-------|-------|------|----|--------|------|
| SE15/SE18-06B-15 | 3/8"   | 15    | 49.5  | 45.8  | 5.3  | 10 | 10x55  | 9    |
| SE15/SE18-08B-15 | 1/2"   | 15    | 65.9  | 61.1  | 7.2  | 10 | 10x55  | 9    |
| SE27-08B-15      | 1/2"   | 15    | 65.9  | 61.1  | 7.2  | 12 | 12x80  | 9    |
| SE27-10B-15      | 5/8"   | 15    | 83.2  | 76.4  | 9.1  | 12 | 12x80  | 10   |
| SE27-12B-15      | 3/4"   | 15    | 99.8  | 91.6  | 11.1 | 12 | 12x80  | 11.1 |
| SE38-10B-15      | 5/8"   | 15    | 83.2  | 76.4  | 9.1  | 20 | 20x100 | 14   |
| SE38-12B-15      | 3/4"   | 15    | 99.8  | 91.6  | 11.1 | 20 | 20x100 | 14   |
| SE38-16B-13      | 1"     | 13    | 117.7 | 106.1 | 16.2 | 20 | 20x100 | 16   |
| SE45-20B-13      | 1-1/4" | 13    | 147.5 | 132.7 | 18.5 | 20 | 20x100 | 18   |

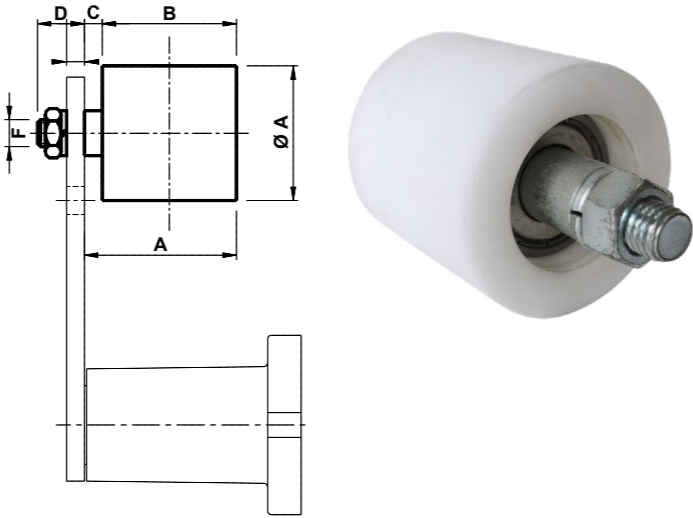
All measurements are in mm.

Block Tensioner Arm - SE Belt Roller

The durable nylon roller is specially designed for optimal belt tensioning on SE-11, SE-15/18, SE-27, SE-38, and SE-45 Arms. Made from high-quality, wear-resistant nylon, it ensures smooth, quiet operation and extends the lifespan of your equipment by maintaining consistent belt tension.

Features

- ▶ Compatible with multiple SE arm models for versatile use
- ▶ High durability reduces wear and maintenance needs
- ▶ Smooth operation minimises noise and vibration
- ▶ Extends belt and equipment life by preventing slippage
- ▶ Easy to install and maintain for improved uptime



| Part No         | Max Speed | Max Belt Width | A  | B   | C  | D  | E  | F   | Weight kg |
|-----------------|-----------|----------------|----|-----|----|----|----|-----|-----------|
|                 | RPM       |                | mm |     |    |    |    |     |           |
| SE11-BT30X35    | 8000      | 30             | 30 | 35  | 2  | 14 | 5  | M8  | 0.08      |
| SE15/18-BT40X45 | 8000      | 40             | 40 | 45  | 6  | 16 | 7  | M10 | 0.17      |
| SE27-BT60X60    | 6000      | 55             | 60 | 60  | 8  | 17 | 8  | M12 | 0.4       |
| SE38-BT80X90    | 5000      | 85             | 80 | 90  | 8  | 25 | 10 | M20 | 1.15      |
| SE45-BT80X135   | 4500      | 130            | 90 | 135 | 10 | 27 | 12 | M20 | 1.75      |

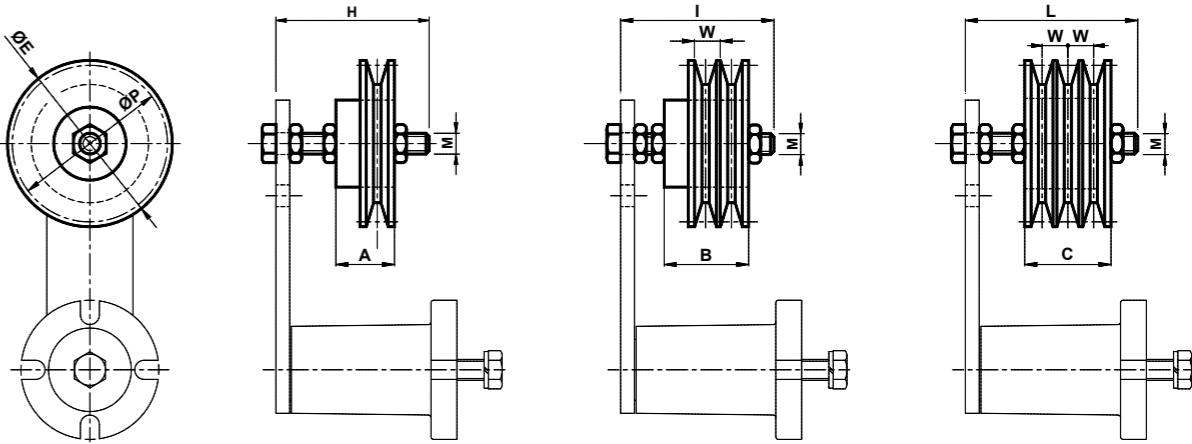
All measurements are in mm.

Block Tensioner Arm - SP (Z-A-B) Pulley

The SP pulley features a durable nylon roller designed for V-belts (profiles Z, A, B) compatible with SE-11, SE-15/18, SE-27, SE-38, and SE-45 arms. Mounted on lubricated bearings, it ensures smooth, maintenance-free operation. Available in single, double, or triple groove configurations to suit various belt setups. Custom profiles and cogged belt options are available upon request.

Features

- ▶ Reliable, consistent belt tension for smooth operation
- ▶ Reduces belt wear and slippage, extending equipment life
- ▶ Maintenance-free with lubricated bearings
- ▶ Minimises noise and vibration
- ▶ Versatile groove options for different belt configurations
- ▶ Resistant to dust and harsh environments
- ▶ Ideal for enhancing performance and longevity of your SE arm belt systems.



| Type    | S        | D        | T        | Belt | Size | A  | B  | C  | ØE   | H  | I  | L   | M   | ØP  | W  | Weight kg |      |      |
|---------|----------|----------|----------|------|------|----|----|----|------|----|----|-----|-----|-----|----|-----------|------|------|
|         |          |          |          |      |      |    |    |    |      |    |    |     |     |     |    | S         | D    | T    |
| SP 30-Z | RE011800 | RE011802 | RE011804 | SPZ  | 30   | 24 | 35 | 40 | 67   | 55 | 60 | 70  | M10 | 63  | 12 | 0.40      | 0.70 | 1.10 |
| SP 40-A | RE011806 | RE011808 | RE011810 | SPA  | 40   | 34 | 49 | 50 | 95.6 | 80 | 80 | 80  | M12 | 90  | 15 | 1.00      | 0.70 | 1.10 |
| SP 40-B | RE011812 | RE011814 |          | SPB  | 40   | 41 | 60 |    | 132  | 90 | 80 |     | M12 | 125 | 19 | 1.90      | 2.80 |      |
| SP 50-B |          |          | RE011816 | SPB  | 50   |    |    | 63 | 132  |    |    | 120 | M20 | 125 | 19 |           |      | 3.50 |

All measurements in mm unless otherwise stated.

# TRANSDRIVE®

## DRIVE PERFORMANCE

Need more information about  
TransDrive products, customised  
products and services, get in touch.

[info@transdrive.com.au](mailto:info@transdrive.com.au)  
[transdrive.com.au](http://transdrive.com.au)

Supplier

