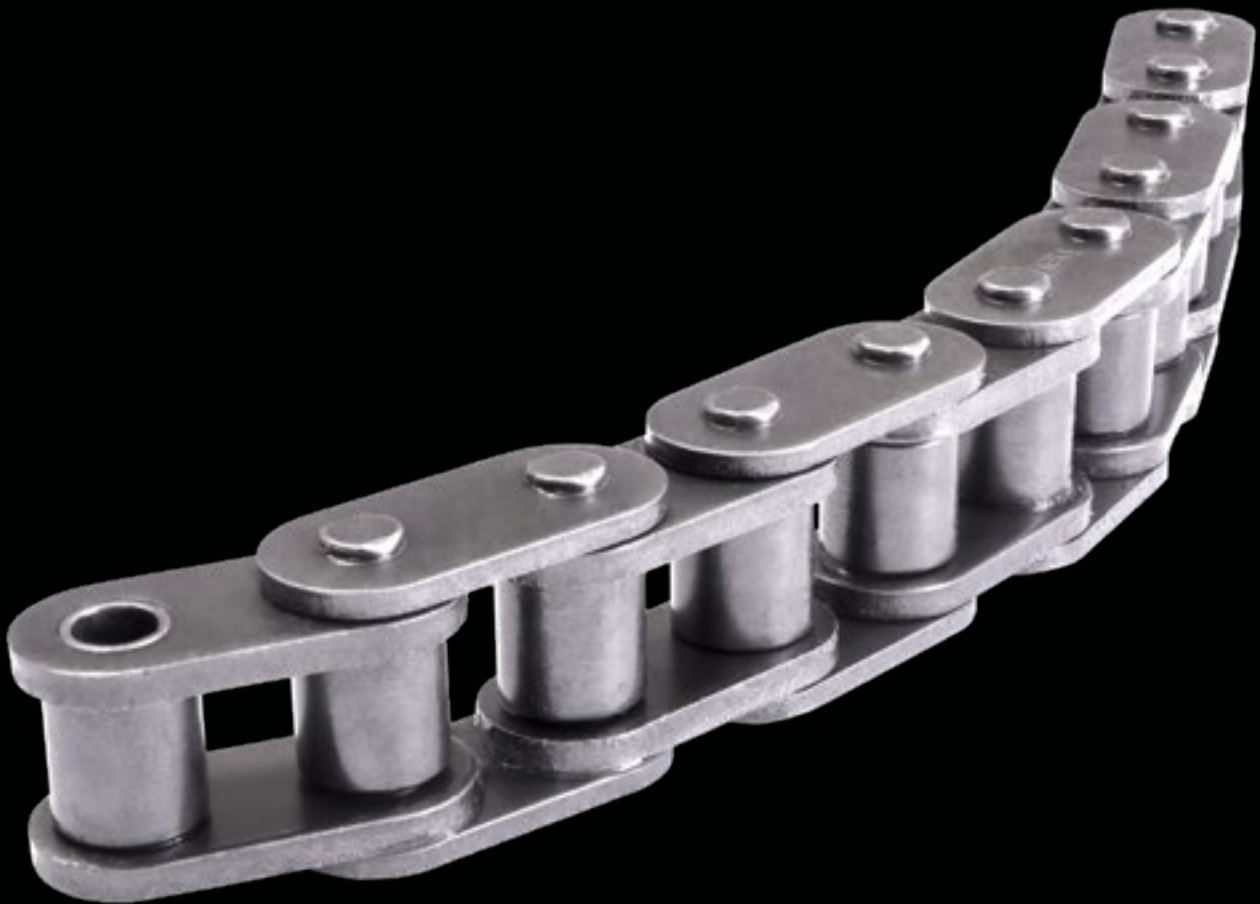


TRANSDRIVE+[®]



**SBR Zintek[®]
Straight Side Plate
Roller Chain**

transdrive.com.au



The TransDrive+® Straight Side Plate Roller Chain redefines performance with unmatched durability and versatility. Precision-engineered with Zintek® 200 XT Corrosion Protection, it offers exceptional resistance to harsh environments, ensuring reliability in the toughest conditions. Boasting a 30% increase in load capacity and an extended operational lifespan, it is purpose-built for heavy-duty applications across diverse industries. For those who demand nothing but the best, the TransDrive+® Roller Chain stands as the ultimate solution.

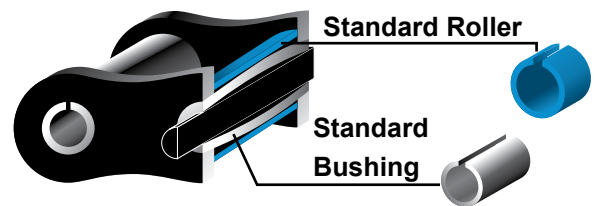
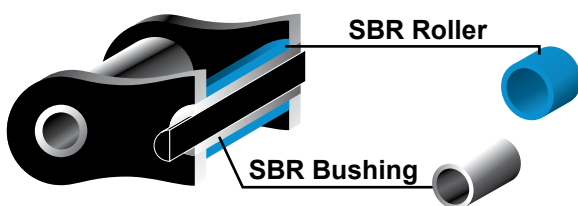
- ▶ Zintek® 200 XT Corrosion Protection
- ▶ 30% Increase in Load Ratings
- ▶ Durable Straight Side Plate
- ▶ SBR (Solid Bush & Roller)

SBR (Solid Bush & Roller)

Solid bushings with tapered ends assure straight ID after assembly resulting in ultra straight bearing surfaces.

Conventional Chain

Bushing ID becomes barrel shaped as a result of press fit and makes uneven contact between pin and bushing.



TRANSDRIVE+[®]

**Need more information about
TransDrive+ products,
customised products and
services, get in touch.**

**info@transdrive.com.au
transdrive.com.au**

Supplier

