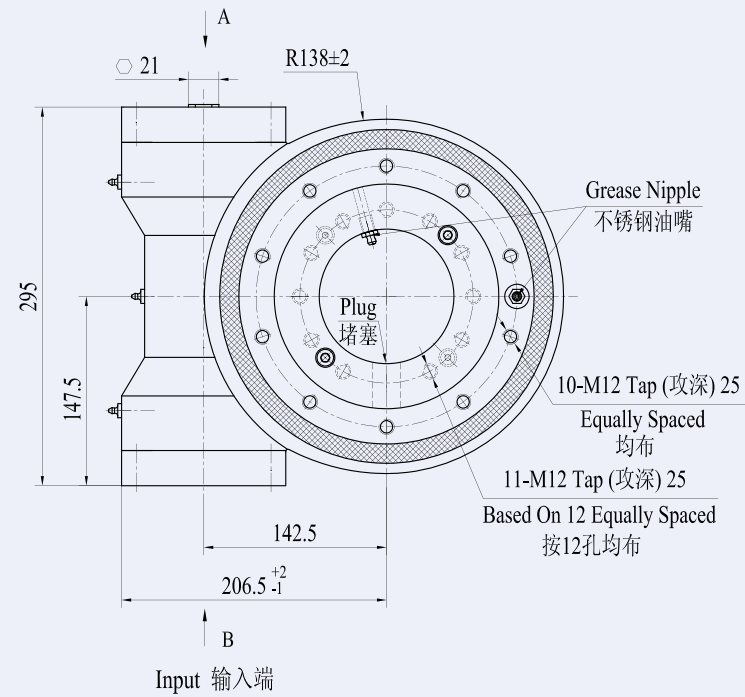


WEA7 | WORM DRIVE
回转式减速器

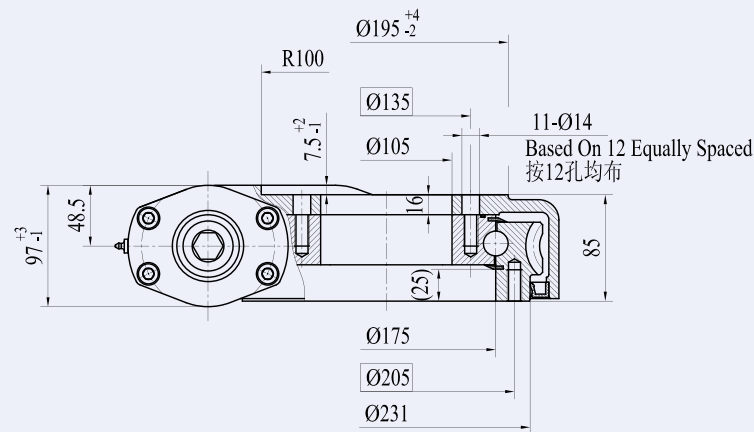
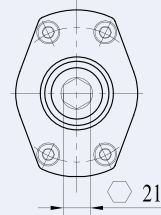
UNITS:
单位: mm
1 inch = 25.4 mm



VIEW A OPTION

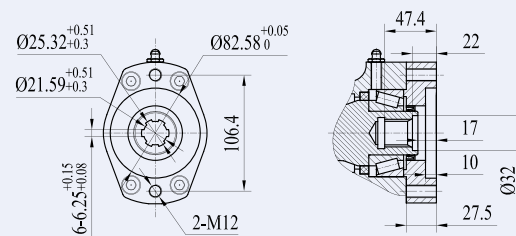
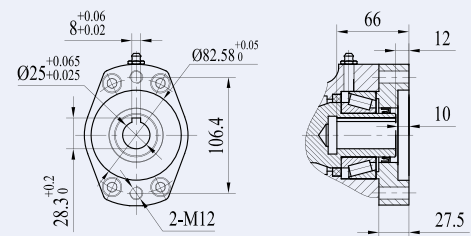
A 向视图

WITH HEX
带六角头



VIEW B OPTION

B 向选项

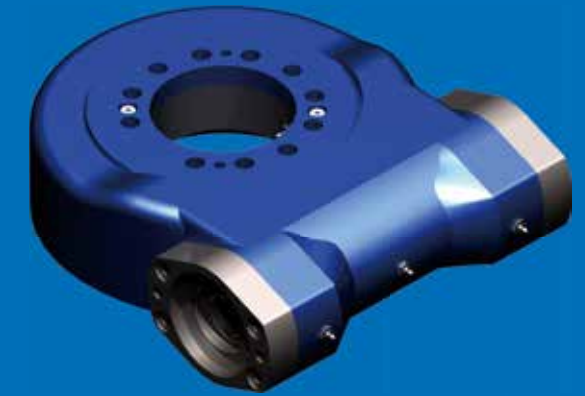
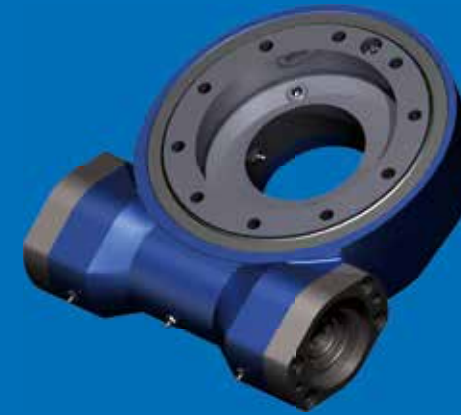


Ø12 Ø14 Ø16 Ø20 Ø25

■ NORMAL

6B SPLINE
花键

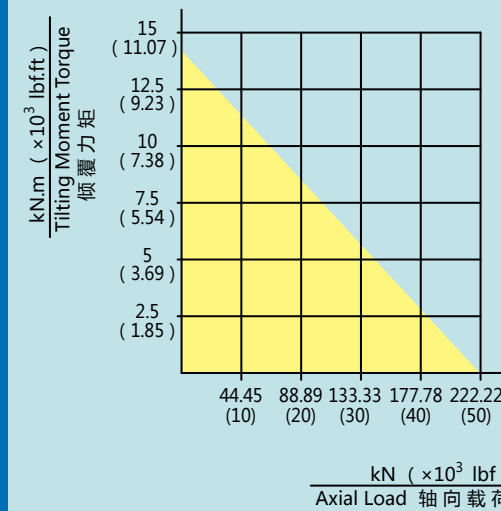
 **35kg**



WEA7 | Worm Drive Performance Parameters
回转式减速器性能参数表

Data 参数 Model 类型	Output Torque 输出转矩	Tilting Moment Torque 倾覆力矩	Holding Torque 保持力矩	Static Axial Rating 轴向静载荷	Static Radial Rating 径向静载荷	Dynamic Axial Rating 轴向动载荷	Dynamic Radial Rating 径向动载荷	Gear Ratio 减速比	Tracking Precision 精度等级	Weight 重量
WEA7	3.5 kN.m 2583 lbf.ft	14.2 kN.m 10.5 × 10 ³ lbf.ft	20 kN.m 14.8 × 10 ³ lbf.ft	220 kN 49.5 × 10 ³ lbf	90 kN 20.2 × 10 ³ lbf	63 kN 14.2 × 10 ³ lbf	48 kN 10.8 × 10 ³ lbf	47 : 1	≤ 0.15°	35kg

MOMENT LOAD CHART 承载力矩表
Axial Load & Tilting Moment
轴向载荷 & 倾覆力矩



 **NOTICE 注意**

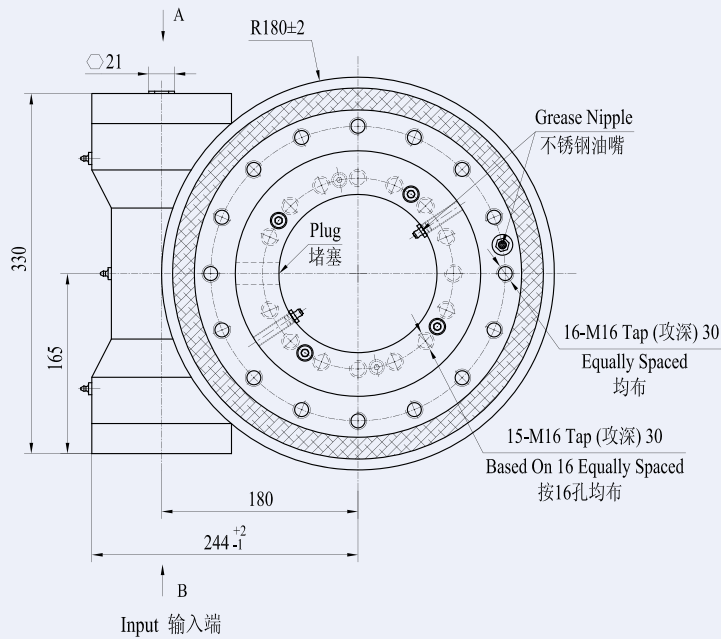
▲ PLEASE BE SURE TO REMAIN UNDER THIS CURVE
选型时请确保实际载荷在曲线范围内

▲ This drawing is just for your reference
以上图纸仅供参考

▲ The drawing is subject to change due to new design without prior notice
本公司保留改进产品的权利而不再另行通知

WEA9 | WORM DRIVE
回转式减速器

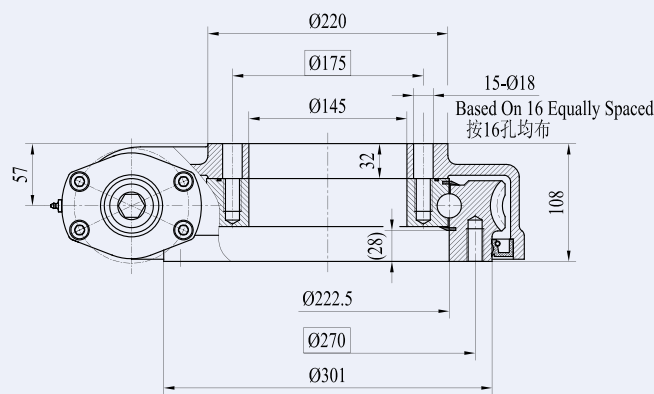
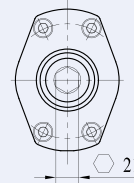
UNITS:
单位: mm
1 inch = 25.4 mm



VIEW A OPTION

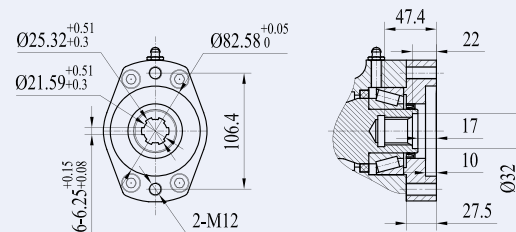
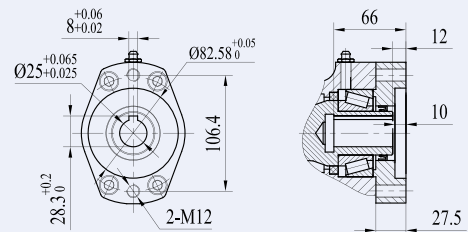
A 向视图

WITH HEX
带六角头



VIEW B OPTION

B 向选项

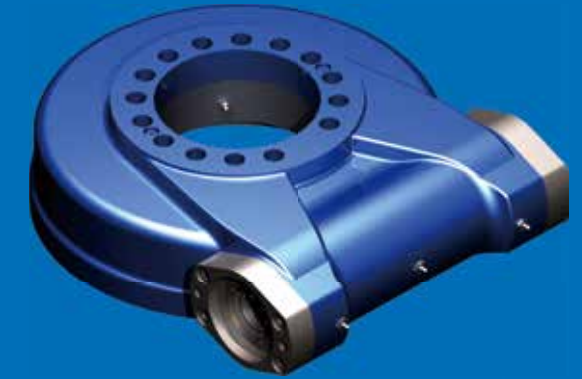


Ø12 Ø14 Ø16 Ø20 **Ø25**

■ NORMAL

6B SPLINE
花键

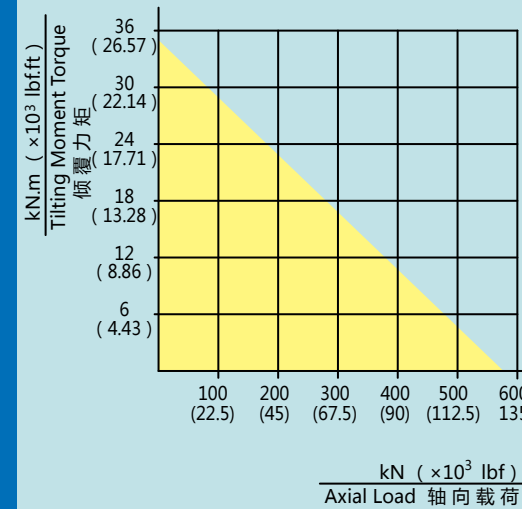
 **53kg**



WEA9 | Worm Drive Performance Parameters
回转式减速器性能参数表

Data 参数 Model 类型	Output Torque 输出转矩	Tilting Moment Torque 倾覆力矩	Holding Torque 保持力矩	Static Axial Rating 轴向静载荷	Static Radial Rating 径向静载荷	Dynamic Axial Rating 轴向动载荷	Dynamic Radial Rating 径向动载荷	Gear Ratio 减速比	Tracking Precision 精度等级	Weight 重量
WEA9	8 kN.m 5904 lbf.ft	35.6 kN.m 26.3 × 10 ³ lbf.ft	38.7 kN.m 29 × 10 ³ lbf.ft	578 kN 129.9 × 10 ³ lbf	215 kN 48.3 × 10 ³ lbf	136 kN 30.6 × 10 ³ lbf	115 kN 25.9 × 10 ³ lbf	62 : 1	≤ 0.15°	53kg

MOMENT LOAD CHART 承载力矩表
Axial Load & Tilting Moment
轴向载荷 & 倾覆力矩



 **NOTICE 注意**

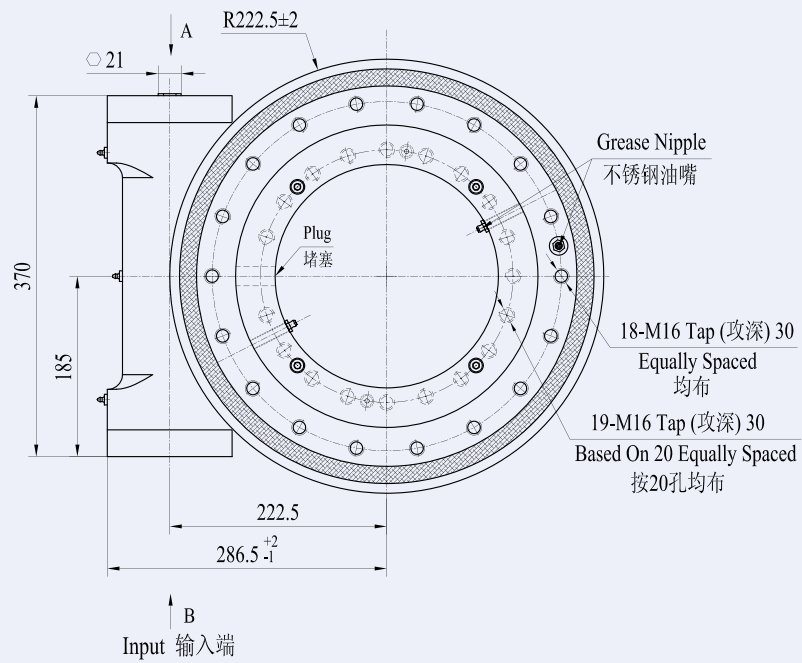
▲ PLEASE BE SURE TO REMAIN UNDER THIS CURVE
选型时请确保实际载荷在曲线范围内

▲ This drawing is just for your reference
以上图纸仅供参考

▲ The drawing is subject to change due to new design without prior notice
本公司保留改进产品的权利而不再另行通知

WEA12 | WORM DRIVE
回转式减速器

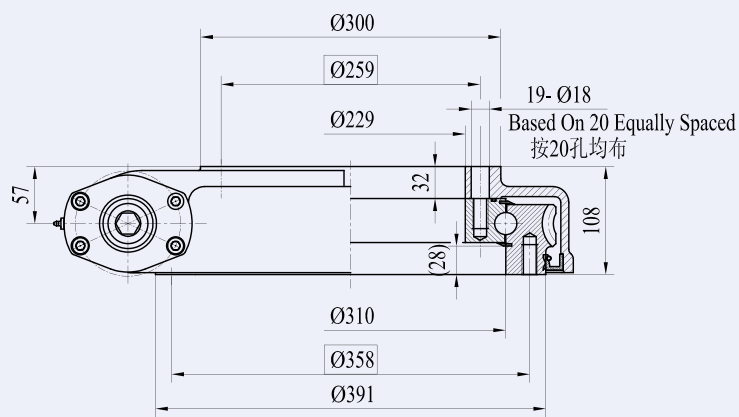
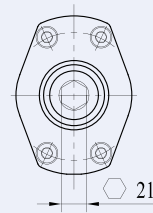
UNITS:
单位: mm
1 inch = 25.4 mm



VIEW A OPTION

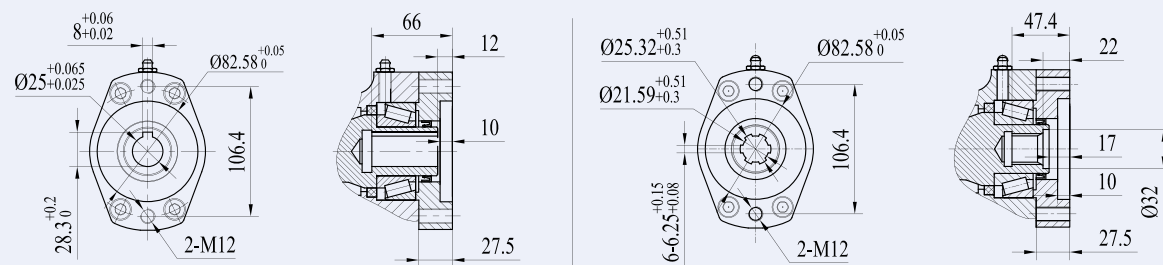
A 向视图

WITH HEX
带六角头



VIEW B OPTION

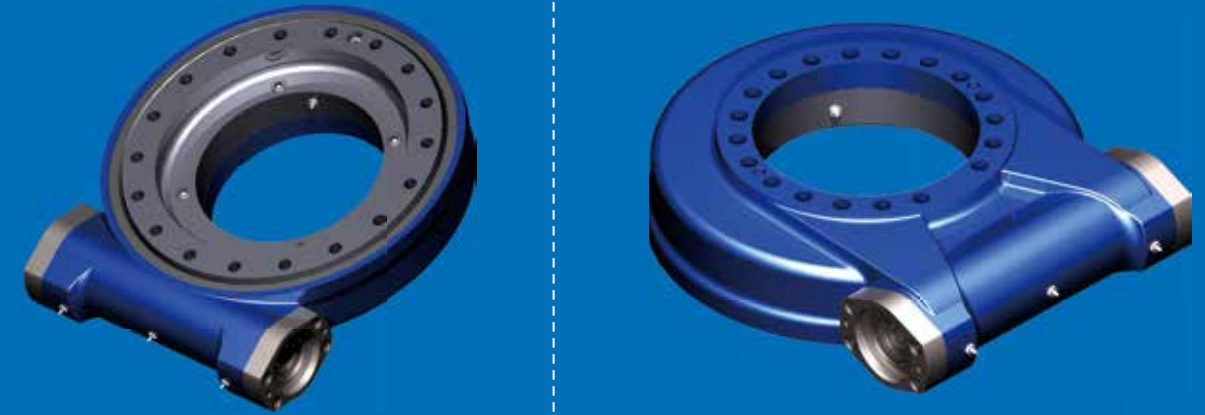
B 向选项



Ø12 Ø14 Ø16 Ø20 Ø25

■ NORMAL

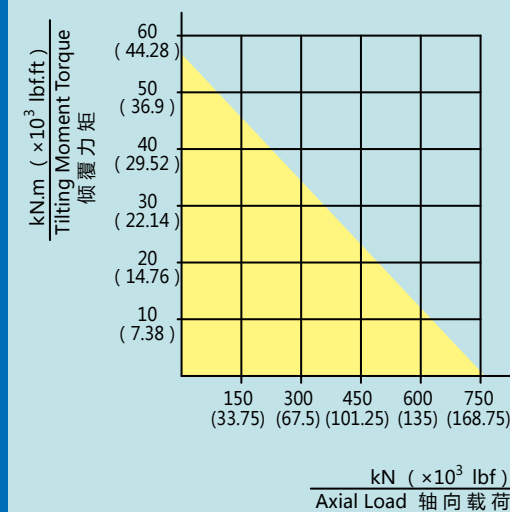
6B SPLINE
花键



WEA12 | Worm Drive Performance Parameters
回转式减速器性能参数表

Data 参数 Model 类型	Output Torque 输出转矩	Tilting Moment Torque 倾覆力矩	Holding Torque 保持力矩	Static Axial Rating 轴向静载荷	Static Radial Rating 径向静载荷	Dynamic Axial Rating 轴向动载荷	Dynamic Radial Rating 径向动载荷	Gear Ratio 减速比	Tracking Precision 精度等级	Weight 重量
WEA12	9.5 kN.m 7011 lbf.ft	57 kN.m 42.1 × 10 ³ lbf.ft	43 kN.m 32 × 10 ³ lbf.ft	760 kN 171.1 × 10 ³ lbf	280 kN 62.9 × 10 ³ lbf	190 kN 42.7 × 10 ³ lbf	148 kN 33.3 × 10 ³ lbf	79 : 1	≤ 0.15°	66.8kg

MOMENT LOAD CHART 承载力矩表
Axial Load & Tilting Moment
轴向载荷 & 倾覆力矩



NOTICE 注意

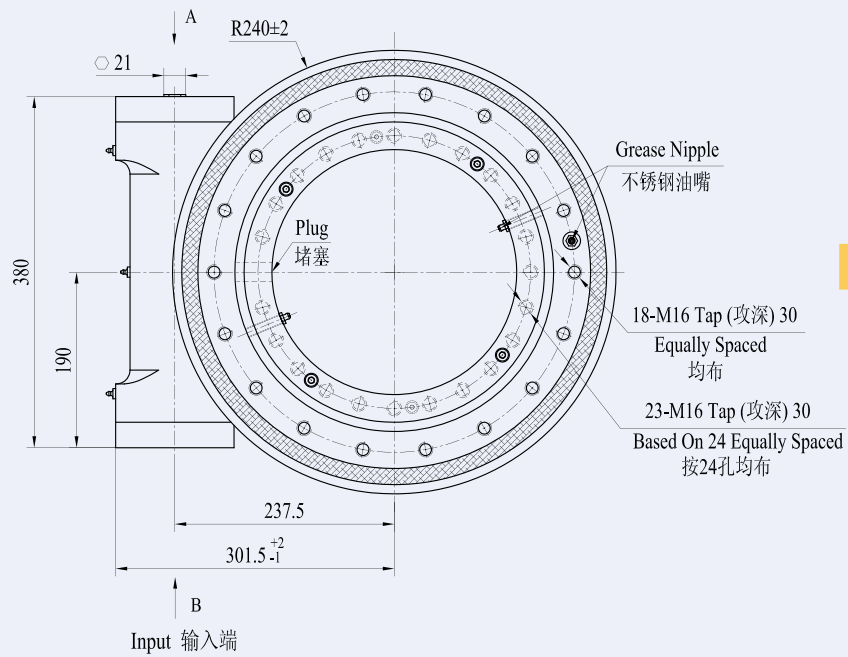
▲ PLEASE BE SURE TO REMAIN UNDER THIS CURVE
选型时请确保实际载荷在曲线范围内

▲ This drawing is just for your reference
以上图纸仅供参考

▲ The drawing is subject to change due to new design without prior notice
本公司保留改进产品的权利而不再另行通知

WEA14 | WORM DRIVE
回转式减速器

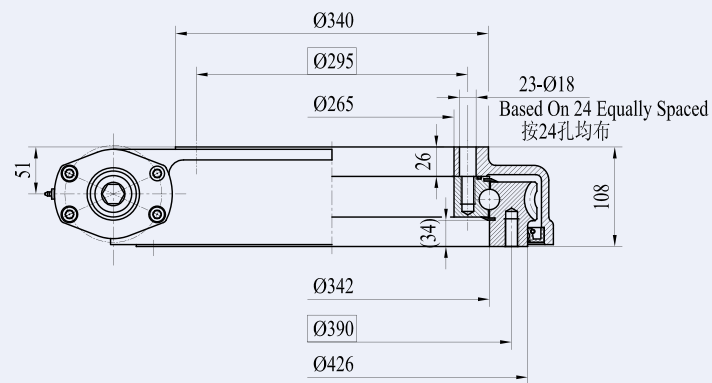
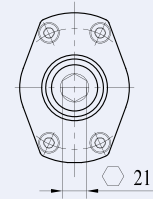
UNITS:
单位: mm
1 inch = 25.4 mm



VIEW A OPTION

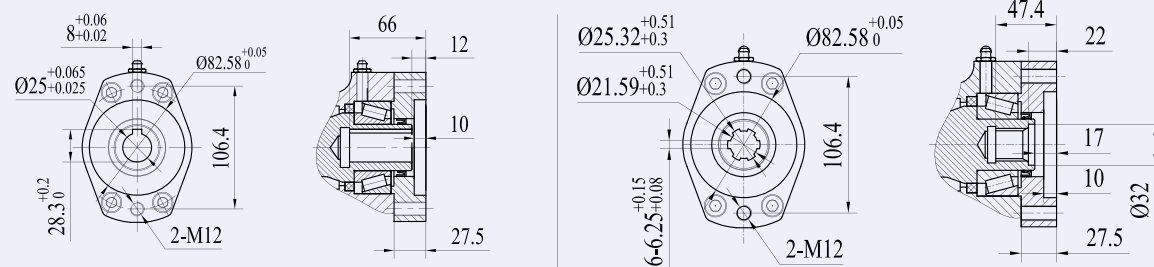
A 向视图

WITH HEX
带六角头



VIEW B OPTION

B 向选项

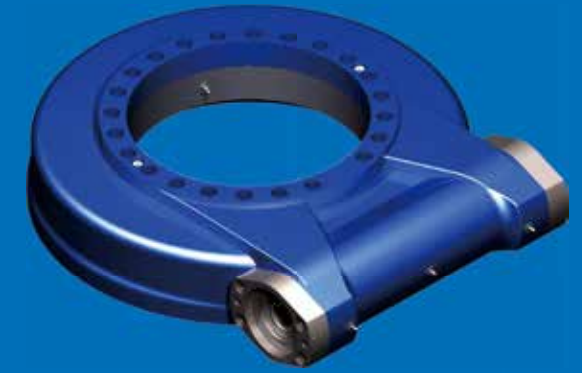
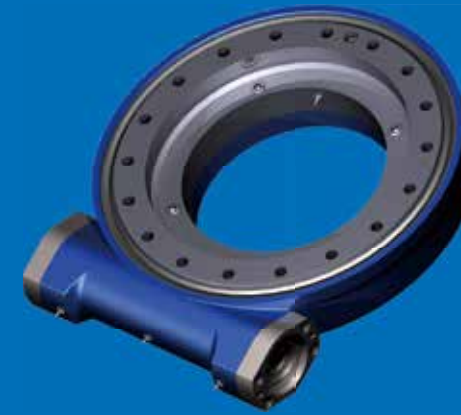


Ø12 Ø14 Ø16 Ø20 **Ø25**

■ NORMAL

6B SPLINE
花键

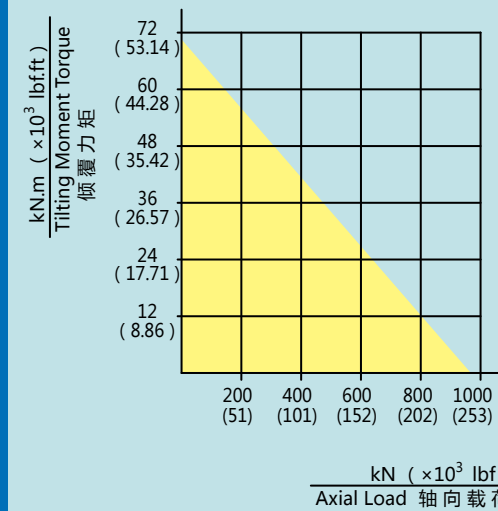
75kg



WEA14 | Worm Drive Performance Parameters
回转式减速器性能参数表

Data 参数 Model 类型	Output Torque 输出转矩	Tilting Moment Torque 倾覆力矩	Holding Torque 保持力矩	Static Axial Rating 轴向静载荷	Static Radial Rating 径向静载荷	Dynamic Axial Rating 轴向动载荷	Dynamic Radial Rating 径向动载荷	Gear Ratio 减速比	Tracking Precision 精度等级	Weight 重量
WEA14	10.8 kN.m 7970 lbf.ft	71.2 kN.m 52.6 × 10 ³ lbf.ft	48 kN.m 35 × 10 ³ lbf.ft	960 kN 215.8 × 10 ³ lbf	360 kN 80.9 × 10 ³ lbf	230 kN 51.7 × 10 ³ lbf	200 kN 44.9 × 10 ³ lbf	86 : 1	≤ 0.13°	75kg

MOMENT LOAD CHART 承载力矩表
Axial Load & Tilting Moment
轴向载荷 & 倾覆力矩



NOTICE 注意

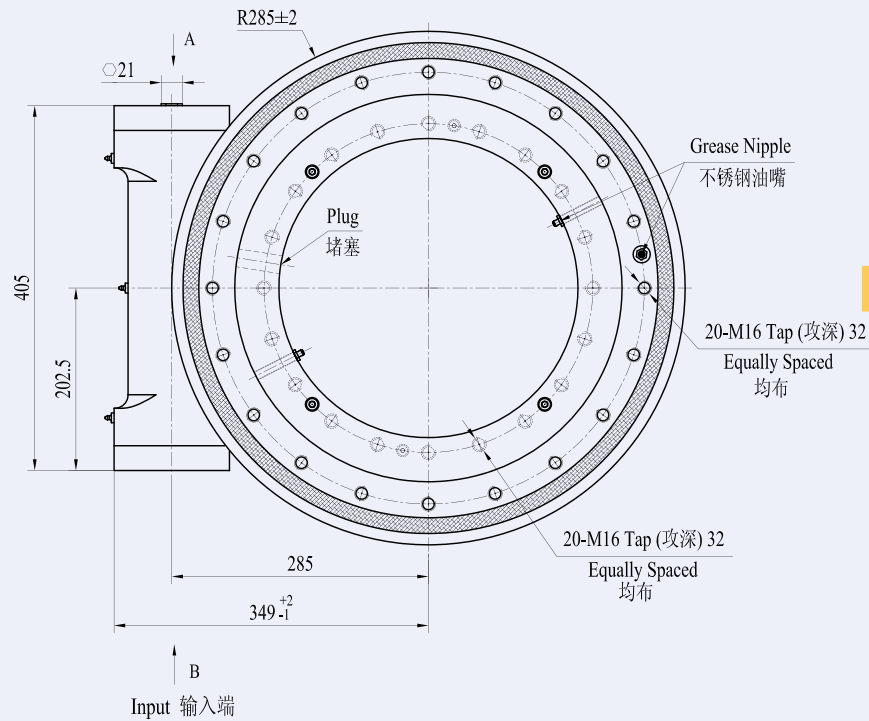
▲ PLEASE BE SURE TO REMAIN UNDER THIS CURVE
选型时请确保实际载荷在曲线范围内

▲ This drawing is just for your reference
以上图纸仅供参考

▲ The drawing is subject to change due to new design without prior notice
本公司保留改进产品的权利而不再另行通知

WEA17 | WORM DRIVE 回转式减速器

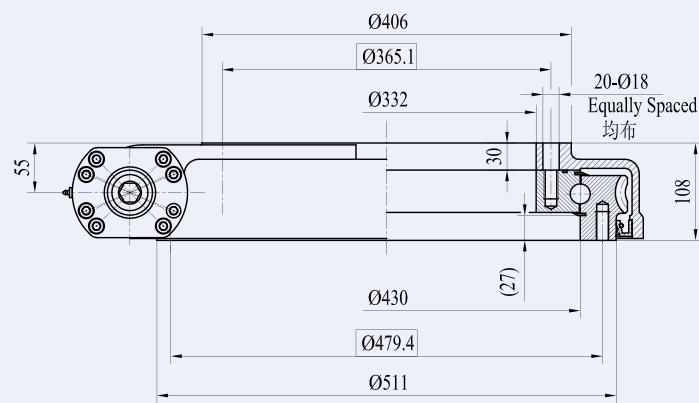
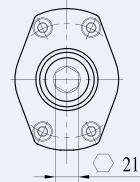
UNITS:
单位: mm
1 inch = 25.4 mm



VIEW A OPTION

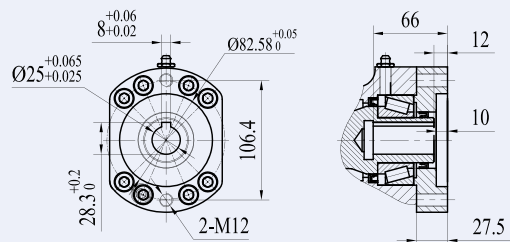
A 向视图

WITH HEX
带六角头



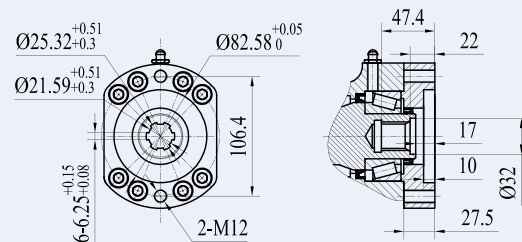
VIEW B OPTION

B 向选项



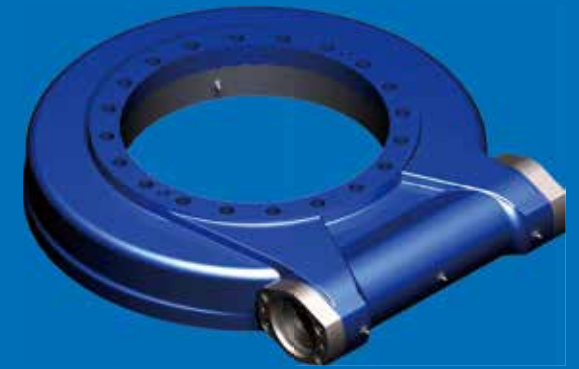
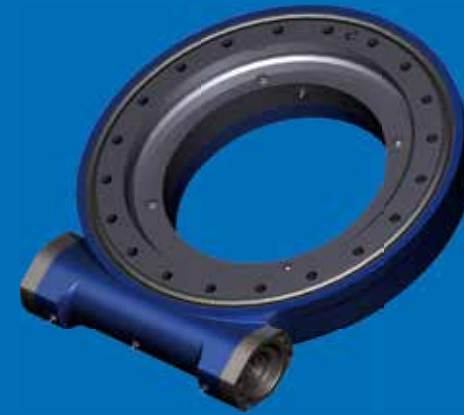
Ø12 Ø14 Ø16 Ø20 Ø25

■ NORMAL



6B SPLINE
花键

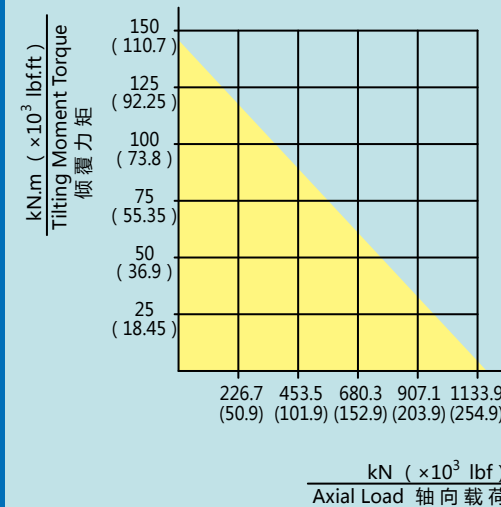
96kg



WEA17 | Worm Drive Performance Parameters 回转式减速器性能参数表

Data 参数 Model 类型	Output Torque 输出转矩	Tilting Moment Torque 倾覆力矩	Holding Torque 保持力矩	Static Axial Rating 轴向静载荷	Static Radial Rating 径向静载荷	Dynamic Axial Rating 轴向动载荷	Dynamic Radial Rating 径向动载荷	Gear Ratio 减速比	Tracking Precision 精度等级	Weight 重量
WEA17	12.96 kN.m	142.4 kN.m	72.3 kN.m	1166 kN	435 kN	280 kN	231 kN	104 : 1	≤ 0.1°	96kg
	9564 lbf.ft	105 × 10 ³ lbf.ft	53.4 × 10 ³ lbf.ft	262 × 10 ³ lbf	97.8 × 10 ³ lbf	62.9 × 10 ³ lbf	51.9 × 10 ³ lbf			

MOMENT LOAD CHART 承载力矩表
Axial Load & Tilting Moment
轴向载荷 & 倾覆力矩



NOTICE 注意

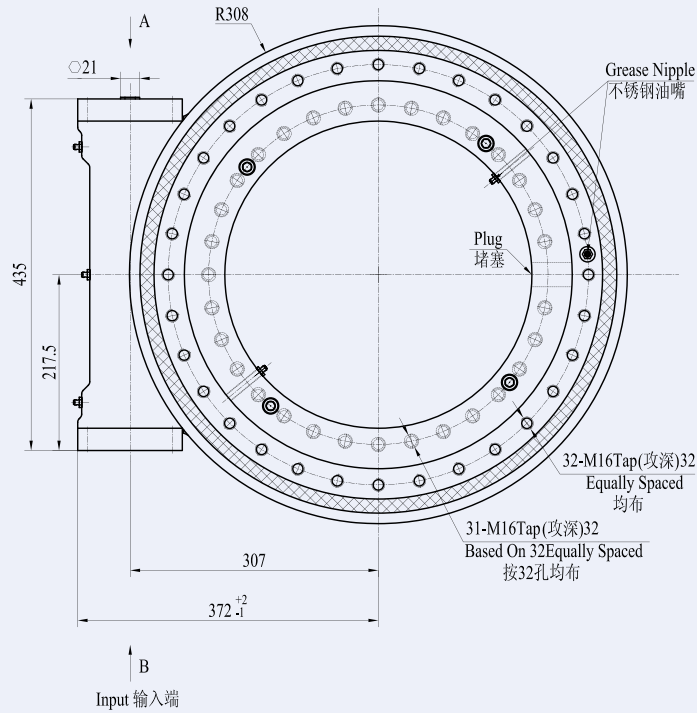
▲ PLEASE BE SURE TO REMAIN UNDER THIS CURVE
选型时请确保实际载荷在曲线范围内

▲ This drawing is just for your reference
以上图纸仅供参考

▲ The drawing is subject to change due to new design without prior notice
本公司保留改进产品的权利而不再另行通知

WEA19 | WORM DRIVE 回转式减速器

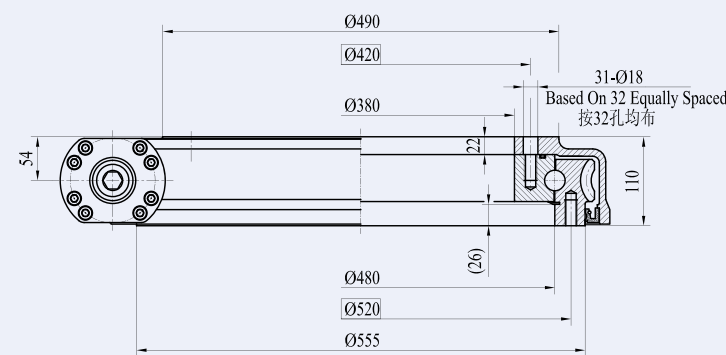
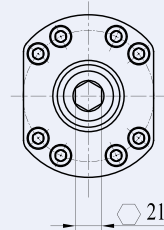
UNITS:
单位: mm
1 inch = 25.4 mm



VIEW A OPTION

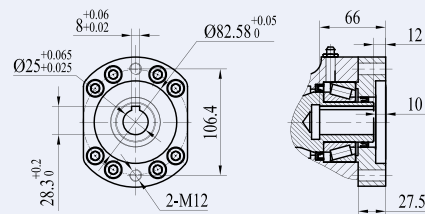
A 向视图

WITH HEX
带六角头



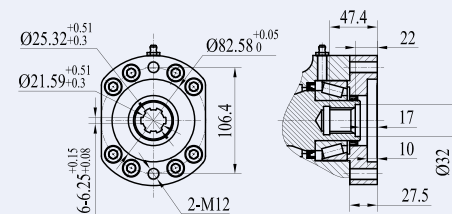
VIEW B OPTION

B 向选项



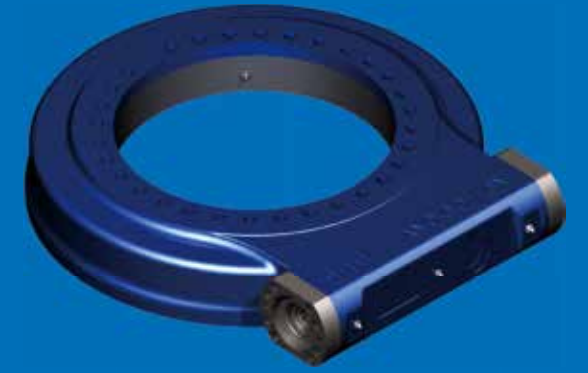
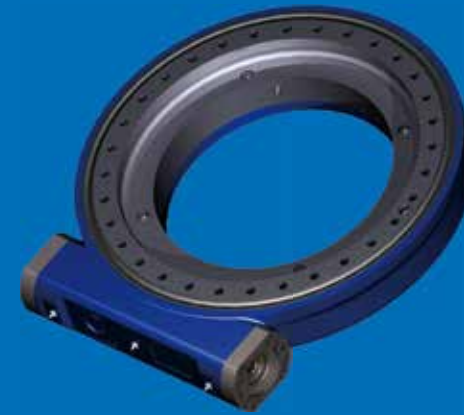
Ø12 Ø14 Ø16 Ø20 **Ø25**

■ NORMAL



6B SPLINE
花键

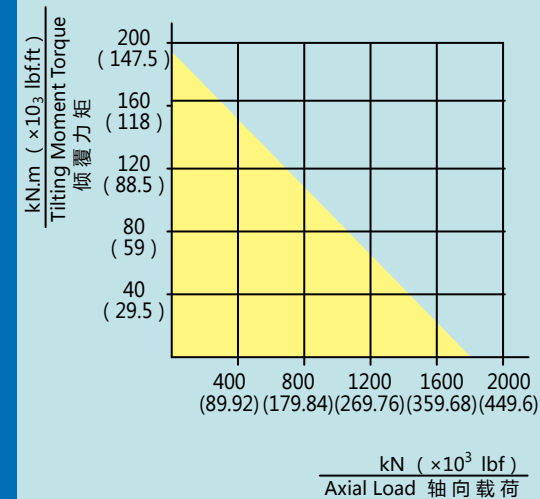
 **130kg**



WEA19 | Worm Drive Performance Parameters 回转式减速器性能参数表

Data 参数 Model 类型	Output Torque 输出转矩	Tilting Moment Torque 倾覆力矩	Holding Torque 保持力矩	Static Axial Rating 轴向静载荷	Static Radial Rating 径向静载荷	Dynamic Axial Rating 轴向动载荷	Dynamic Radial Rating 径向动载荷	Gear Ratio 减速比	Tracking Precision 精度等级	Weight 重量
WEA19	18.5 kN.m 13653 lbf.ft	196 kN.m 144.6 × 10 ³ lbf.ft	86.7 kN.m 64 × 10 ³ lbf.ft	1800 kN 404.6 × 10 ³ lbf	675 kN 151.7 × 10 ³ lbf	290 kN 65.2 × 10 ³ lbf	250 kN 56.2 × 10 ³ lbf	93 : 1	≤ 0.1°	130kg

MOMENT LOAD CHART 承载力矩表
Axial Load & Tilting Moment
轴向载荷 & 倾覆力矩



 **NOTICE 注意**

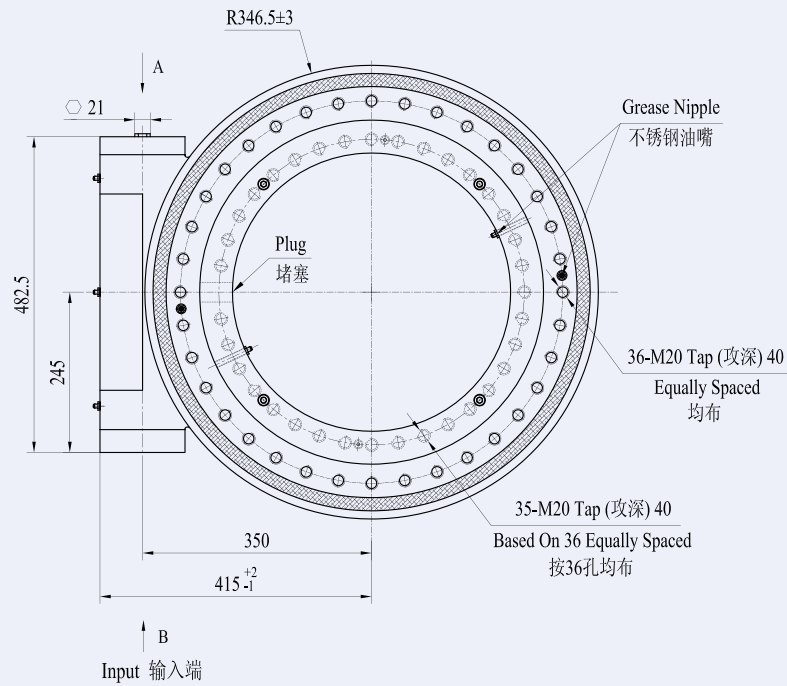
▲ PLEASE BE SURE TO REMAIN UNDER THIS CURVE
选型时请确保实际载荷在曲线范围内

▲ This drawing is just for your reference
以上图纸仅供参考

▲ The drawing is subject to change due to new design without prior notice
本公司保留改进产品的权利而不再另行通知

WEA21 | WORM DRIVE 回转式减速器

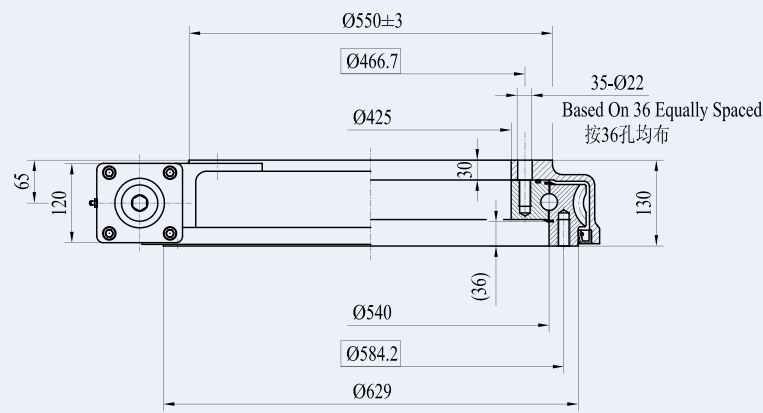
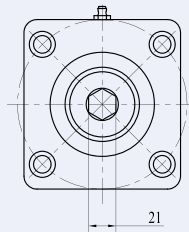
UNITS:
单位: mm
1 inch = 25.4 mm



VIEW A OPTION

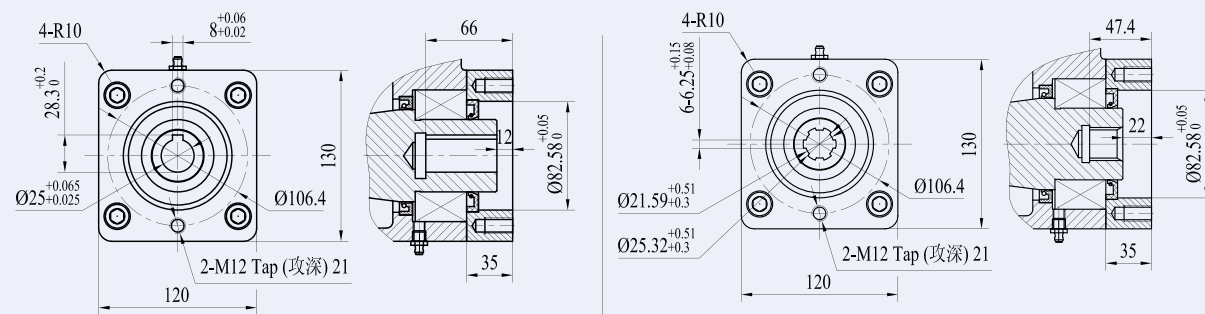
A 向视图

WITH HEX
带六角头



VIEW B OPTION

B 向选项

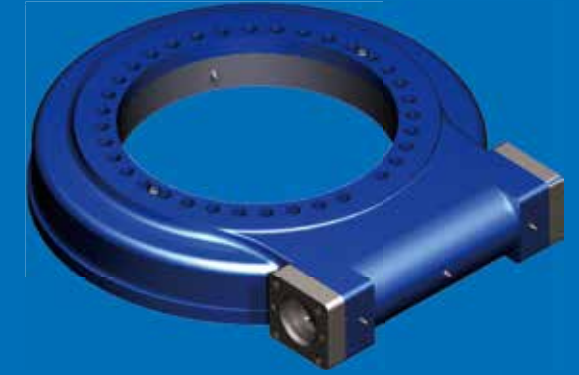
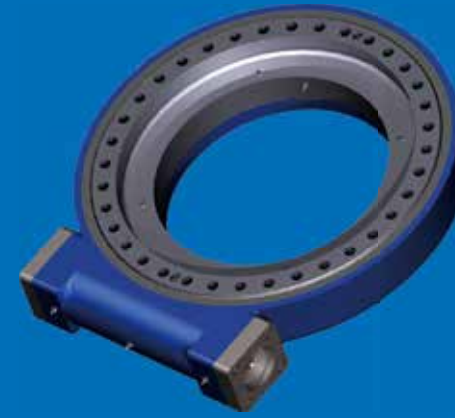


Ø12 Ø14 Ø16 Ø20 Ø25

■ NORMAL

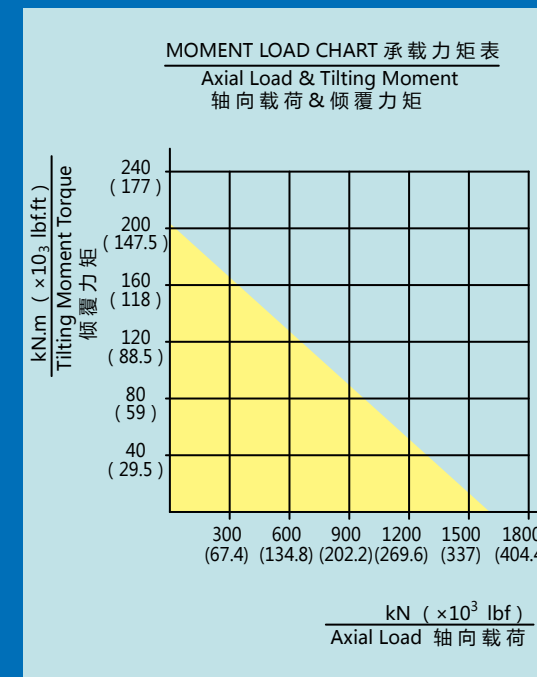
6B SPLINE
花键

 **172kg**



WEA21 | Worm Drive Performance Parameters 回转式减速器性能参数表

Data 参数 Model 类型	Output Torque 输出转矩	Tilting Moment Torque 倾覆力矩	Holding Torque 保持力矩	Static Axial Rating 轴向静载荷	Static Radial Rating 径向静载荷	Dynamic Axial Rating 轴向动载荷	Dynamic Radial Rating 径向动载荷	Gear Ratio 减速比	Tracking Precision 精度等级	Weight 重量
WEA21	28.7 kN.m 21180 lbf.ft	203 kN.m 150 × 10 ³ lbf.ft	105.8 kN.m 78.1 × 10 ³ lbf.ft	1598 kN 359 × 10 ³ lbf	640 kN 144 × 10 ³ lbf	385 kN 87 × 10 ³ lbf	335 kN 75 × 10 ³ lbf	90 : 1	≤ 0.1°	172kg



NOTICE 注意

▲ PLEASE BE SURE TO REMAIN UNDER THIS CURVE
选型时请确保实际载荷在曲线范围内

▲ This drawing is just for your reference
以上图纸仅供参考

▲ The drawing is subject to change due to new design without prior notice
本公司保留改进产品的权利而不再另行通知

